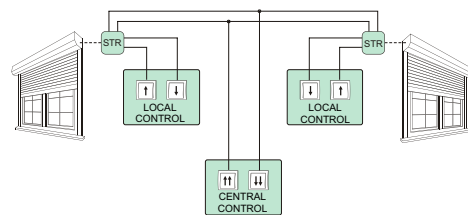


23. ROLLER BLIND CONTROLLER

PURPOSE

The roller blind controllers are designed for controlling roller blinds (up and down movement) or other devices (for example, gates) that are driven by a single-phase AC electric motor and operated by means of momentary switches (for example, bell-pushes). The controller can operate as an independent unit (designated for opening/closing one roller blind) as well as the controllers can be combined into groups that enable the central controlling of many roller blinds



FUNCTIONING

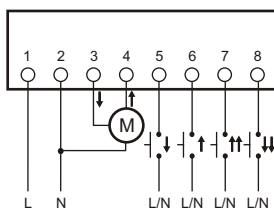
The roller blind motor is activated by the momentary switching of a current pulse (L or N) to one of the control inputs. The motor is activated at a time programmed previously by the user. The activation time programmed enables the complete lifting or lowering of the roller blind. Also, there is a possibility of stopping the rolled blind activated at a level selected by the user (non-complete opening or closing of the roller blind).

DOUBLE-BUTTON TYPE

Local control - a group of push-buttons that controls one roller blind. ↑ - upwards (opening); ↓ - downwards (closing). Pressing the local control push-button activates the movement of the roller blind in a selected direction. If the roller blind is already moving, pressing the local control push-button will stop the roller blind.

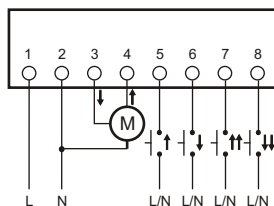
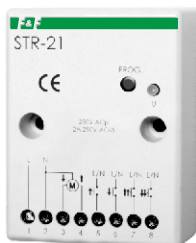
Central control - a common group of push-buttons for many controllers (minimum two controllers) that controls all roller blinds included in the central control system. ↑↑ - all upwards; ↓↓ - all downwards. Pressing the central control push-button activates the movement of the roller blinds in a selected direction. If one of the roller blinds is already moving in the same direction, its movement will be continued. If one of the roller blinds is moving in the opposite direction, this roller blind will be first stopped and then its movement will be activated in the direction in accordance with the command sent to the central input. The central control enables only activating the movement of the roller blinds in a selected direction. The roller blind will be stopped after the programmed movement time or when any of the local control push-buttons is pressed.

STR-1



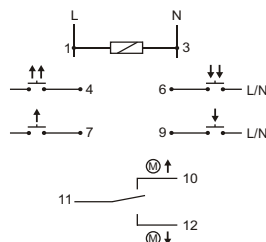
supply	230V AC
current load AC-3	<2A
Control pulse current for L/N	<1mA
actuation time - programmable	0sec+10min
indication of power suppl/programming	LED green
power consumption	1W
working temperature	-25+50°C
connection	signal 4×DY 1mm ² , l=10cm
	supplying 4×DY 1,5mm ² , l=10cm
dimensions	Ø55, h=13mm
fixed	to under plaster box Ø60

STR-21



supply	STR-21 230V	230V AC
current load AC-3		<2A
control pulse current for L/N		<1mA
power supply indicator		LED green
power consumption		0,8W
working temperature		-25 +50°C
connection	screw terminals 2,5mm ²	
dimensions	50×67×26mm	
fixing	two screws to the base	

STR-421



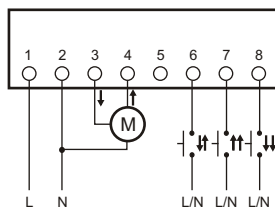
supply	STR-421 230V	230V AC
	STR-421 24V	24V AC
current load AC-3		<2A
control pulse current for L/N		<1mA
power supply indicator		LED green
operating mode indicator		2×LED red
power consumption		0,8W
working temperature		-25 +50°C
connection	screw terminals 2,5mm ²	
dimensions	1 module (18mm)	
fixing	on rail TH-35	

ONE-BUTTONS

Local control - a group of push-buttons that controls one roller blind. ↑↓-upwards (opening) / downwards (closing). Pressing the local control push-button activates the movement of the roller blind in a direction opposite to the direction of a previously performed movement (after connecting the controller to the power supply, the first movement closes the roller blind). If the roller blind is already moving, pressing the local control push-button will stop the roller blind movement. When the local control push-button is pressed again, the movement of the roller blind in the opposite direction is activated.

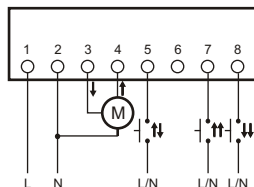
Central control - a common group of push-buttons for many controllers (minimum two controllers) that controls all roller blinds included in the central control system. ↑↑ - all upwards; ↓↓ - all downwards. Pressing the central control push-button activates the movement of the roller blinds in a selected direction. If one of the roller blinds is already moving in the same direction, its movement will be continued. If one of the roller blinds is moving in the opposite direction, this roller blind will be first stopped and then its movement will be activated in the direction in accordance with the command sent to the central input. The central control enables only activating the movement of the roller blinds in a selected direction. The roller blind will be stopped after the programmed movement time or when any of the local control push-buttons is pressed.

STR-2



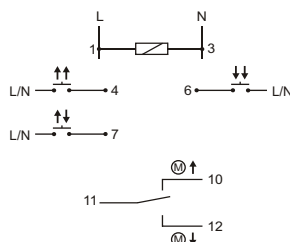
supply	230V AC
current load AC-3	<2A
Control pulse current for L/N	<1mA
actuation time - programmable	0sec+10min
indication of power suppl/programming	LED green
power consumption	1W
working temperature	-25+50°C
connection	signal 4×DY 1mm ² , l=10cm
	supplying 4×DY 1.5mm ² , l=10cm
dimensions	Ø55, h=13mm
fixing	to under plaster box Ø60

STR-22



supply	STR-22 230V	230V AC
current load AC-3		<2A
control pulse current for L/N		<1mA
power supply indicator		LED green
power consumption		0,8W
working temperature		-25 +50°C
connection	screw terminals 2,5mm ²	
dimensions	50×67×26mm	
fixing	two screws to the base	

STR-422



supply	STR-422 230V	230V AC
	STR-422 24V	24V AC
current load AC-3		<2A
control pulse current for L/N		<1mA
power supply indicator		LED green
operating mode indicator		2×LED red
power consumption		0,8W
working temperature		-25 +50°C
connection	screw terminals 2,5mm ²	
dimensions	1 module (18mm)	
fixing	on rail TH-35	

PRACTICAL SOLUTIONS

