

High Current Button Rectifiers

FEATURES

- Diffused junction
- Low leakage
- High surge capability
- Low cost construction utilizing void-free molded plastic technique
- Compliant to RoHS Directive 2011/65/EU and in accordance to WEEE 2002/96/EC
- Halogen-free according to IEC 61249-2-21 definition


AR


MECHANICAL DATA

Case: AR

Molding compound, UL flammability classification rating 94V-0

Base P/N with suffix "G" on packing code - green compound (halogen-free)

Terminal: Matte tin plated leads, solderable per JESD22-B102

Meet JESD 201 class 1A whisker test

Weight: 1.8 g (approximately)

MAXIMUM RATINGS AND ELECTRICAL CHARACTERISTICS (T _A =25°C unless otherwise noted)										
PARAMETER	SYMBOL	AR 25A	AR 25B	AR 25D	AR 25G	AR 25J	AR 25K	AR 25M	UNIT	
Maximum repetitive peak reverse voltage	V _{RRM}	50	100	200	400	600	800	1000	V	
Maximum RMS voltage	V _{RMS}	35	70	140	280	420	560	700	V	
Maximum DC blocking voltage	V _{DC}	50	100	200	400	600	800	1000	V	
Maximum average forward rectified current	I _{F(AV)}	25								A
Peak forward surge current, 8.3 ms single half sine-wave superimposed on rated load	I _{FSM}	400								A
Maximum instantaneous forward voltage (Note 1) @ 25 A	V _F	1.0								V
Maximum reverse current @ Rated VR	I _R	5								μA
		250								
Typical reverse recovery time (Note 2)	t _{rr}	3								μs
Typical junction capacitance (Note 3)	C _j	300								pF
Typical Thermal Resistance	R _{θJC}	1								°C/W
Operating junction temperature range	T _J	- 50 to +175								°C
Storage temperature range	T _{STG}	- 50 to +175								°C

Note 1: Pulse test with PW=300μs, 1% duty cycle

 Note 2: Reverse Recovery Time Test Conditions: I_F=0.5A, I_R=1.0A, I_{RR}=0.25A

Note 3: Measured at 1 MHz and Applied Reverse Voltage of 4.0V D.C.

ORDERING INFORMATION

PART NO.	PACKING CODE	PACKING CODE SUFFIX	PACKAGE	PACKING
AR25x (Note 1)	B0	G	AR	1,000 / Bulk packing

Note 1: "x" defines voltage from 50V (AR25A) to 1000V (AR25M)

EXAMPLE

PREFERRED P/N	PART NO.	PACKING CODE	PACKING CODE SUFFIX	DESCRIPTION
AR25M B0	AR25M	B0		
AR25M B0G	AR25M	B0	G	Green compound

RATINGS AND CHARACTERISTICS CURVES

($T_A=25^\circ\text{C}$ unless otherwise noted)

FIG. 1- MAXIMUM FORWARD CURRENT DERATING CURVE

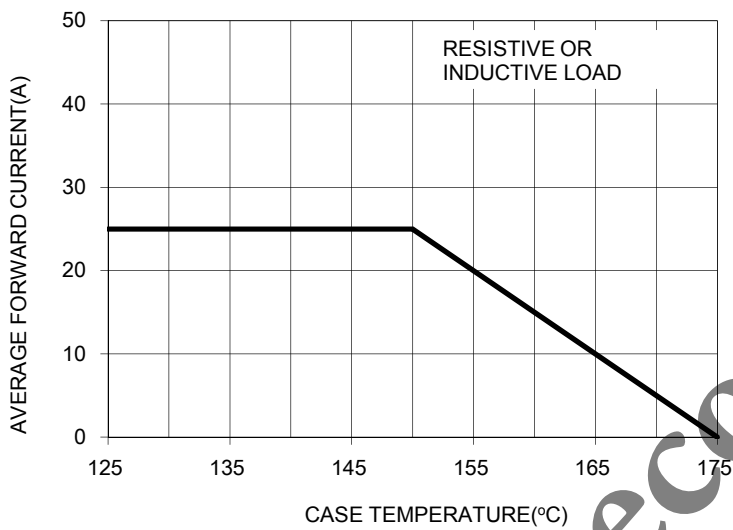


FIG. 2- TYPICAL REVERSE CHARACTERISTICS

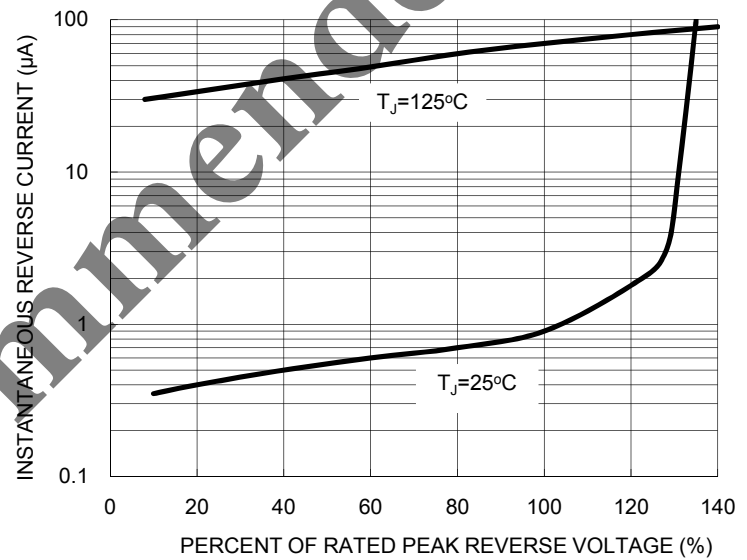


FIG. 3- MAXIMUM NON-REPETITIVE PEAK FORWARD SURGE CURRENT

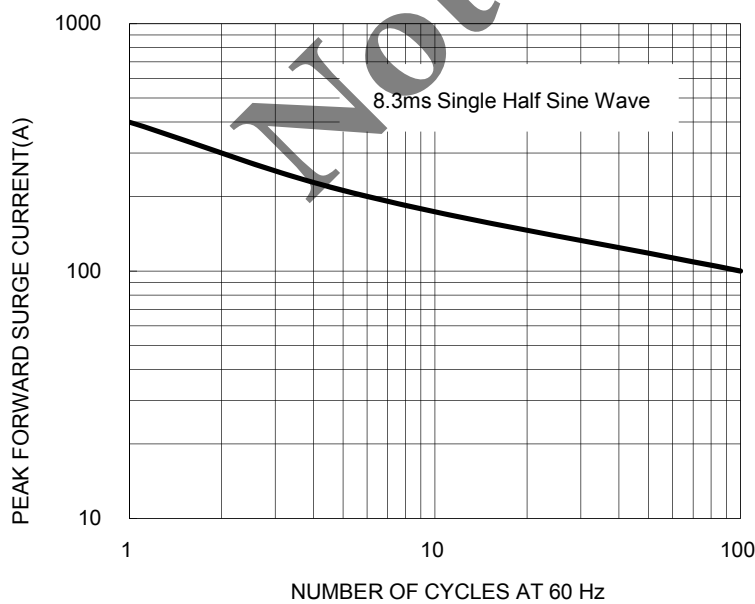


Fig. 4 TYPICAL FORWARD CHARACTERISTICS

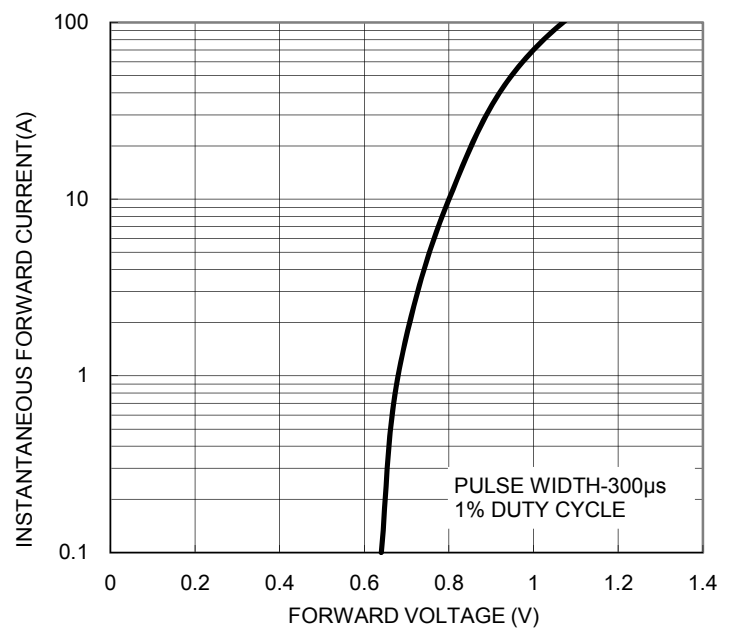


FIG. 5 TYPICAL JUNCTION CAPACITANCE

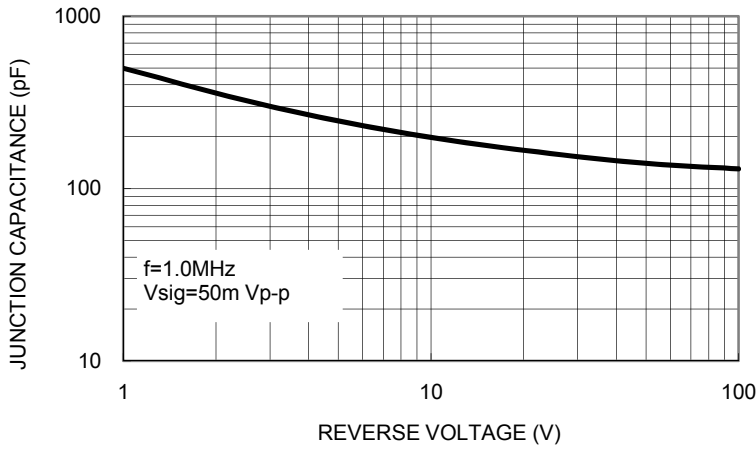
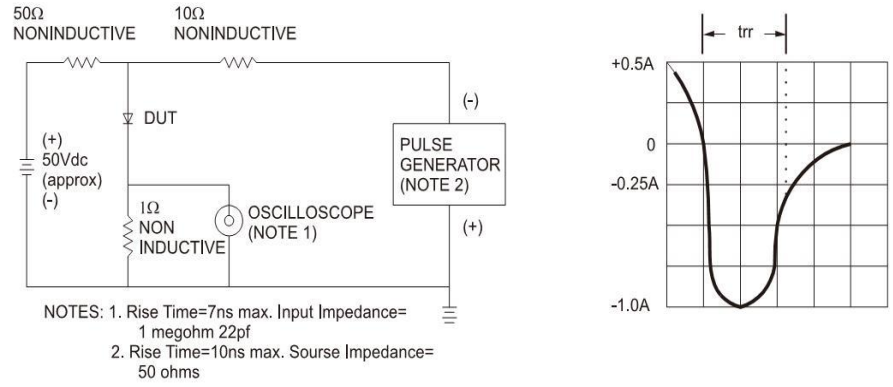
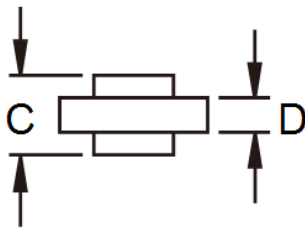


FIG.6- REVERSE RECOVERY TIME CHARACTERISTIC AND TEST CIRCUIT DIAGRAM



PACKAGE OUTLINE DIMENSIONS



DIM.	Unit (mm)		Unit (inch)	
	Min	Max	Min	Max
A	5.50	5.70	0.217	0.224
B	9.70	10.40	0.382	0.409
C	6.00	6.40	0.236	0.252
D	4.20	4.70	0.165	0.185

MARKING DIAGRAM



P/N = Specific Device Code
G = Green Compound
YW = Date Code
F = Factory Code

Not Recommended

Notice

Specifications of the products displayed herein are subject to change without notice. TSC or anyone on its behalf, assumes no responsibility or liability for any errors inaccuracies.

Information contained herein is intended to provide a product description only. No license, express or implied, to any intellectual property rights is granted by this document. Except as provided in TSC's terms and conditions of sale for such products, TSC assumes no liability whatsoever, and disclaims any express or implied warranty, relating to sale and/or use of TSC products including liability or warranties relating to fitness for a particular purpose, merchantability, or infringement of any patent, copyright, or other intellectual property right.

The products shown herein are not designed for use in medical, life-saving, or life-sustaining applications. Customers using or selling these products for use in such applications do so at their own risk and agree to fully indemnify TSC for any damages resulting from such improper use or sale.