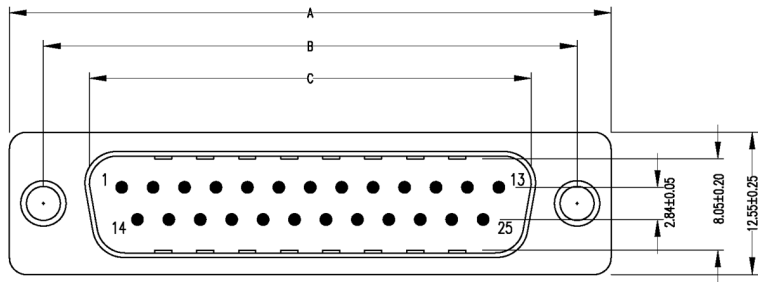
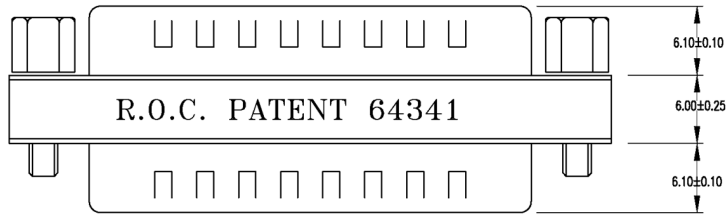
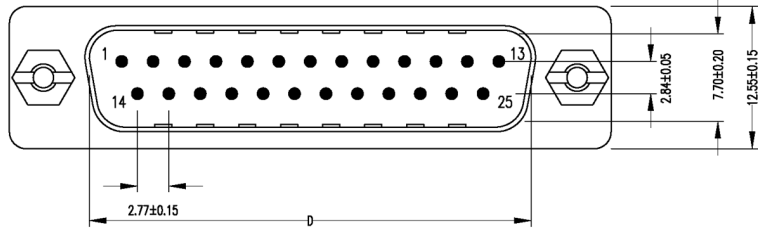
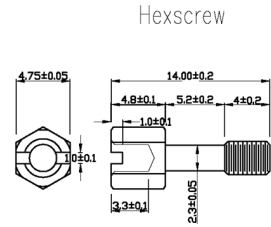


No.	Changes and/or Note No.	Date	Sign	No.	Changes and/or Note No.	Date	Sign



Type	Item	A±0.15	B±0.10	C±0.15	D±0.10
9M/M		30.8	25.0	16.92	16.92
15M/M		39.2	33.3	25.25	25.25
25M/M		53.05	47.04	38.96	38.96
37M/M		69.4	63.5	55.42	55.42



GENDER CHANGER
 PIN OUT: R1 = L1
 Label: yellow color with black character
 One side: U.S.A. PATENT 5199906 GENDER CHANGER
 The other side: R.O.C. PATENT 64341 GENDER CHANGER
 SPECIFICATION
 INSULATOR: PBT Glass fibre reinforced UL 94 V0
 CONTACT: Brass
 CONTACT PLATING: Gold plated over nickel
 SHELL: Tin plated shell
 CURRENT RATING: 3 AMP
 DIELECTRIC STRENGTH: 1000V AC for one minute
 INSULATOR RESISTANCE: 1000MΩ min at 500V DC
 TEMPERATURE: -55°C — +105°C

DATE	2012-08-16	DRAWN	MRR	SCALE	MATERIAL TYPE
		APPROVED			REPLACES
		GENDER CHANGER - STANDARD Male to Male DMGC-xxxx-MM			
				DRAWING No.	DMGC-MM