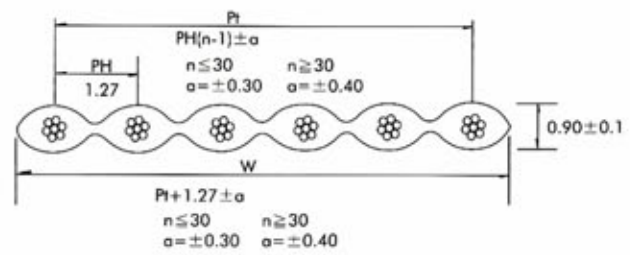


UL & CSA GRADE:

UL STYLE : 20029	CSA STYLE : C22.2 No.210.2
Rate temperature : 105°C	Rate temperature : 105°C
Rate voltage : 300V	Rate voltage : 300V
Flame Test : VW-1	Flame Test : FT1,FT2

CONSTRUCTION DRAWING :



CONDUCTOR: Stranded

AWG size : 28 AWG
 Number of strands in each conductor : 7/0. 127mm
 Lay of strands in each conductor : 0.5 inch at least
 Cross sec. area : 156mil

USAGE :

Internal connection for computer, duplicator, facsimile, game, interface and many other electronic equipments.

INSULATION :

Material of insulation : polyvinyl chloride (PVC) ten colors available
 Extruded PVC insulated singles bonded together
 Insulation thickness average : 9mil
 Min. insulation thickness : 7mil

PHYSICAL PROPERTIES: after 7 days air oven at 136°C

Average tensile strength : 1500 lbs/inch²
 Percent of original : 70% at least
 Average elongation : 200%
 Percent of original : 65% at least

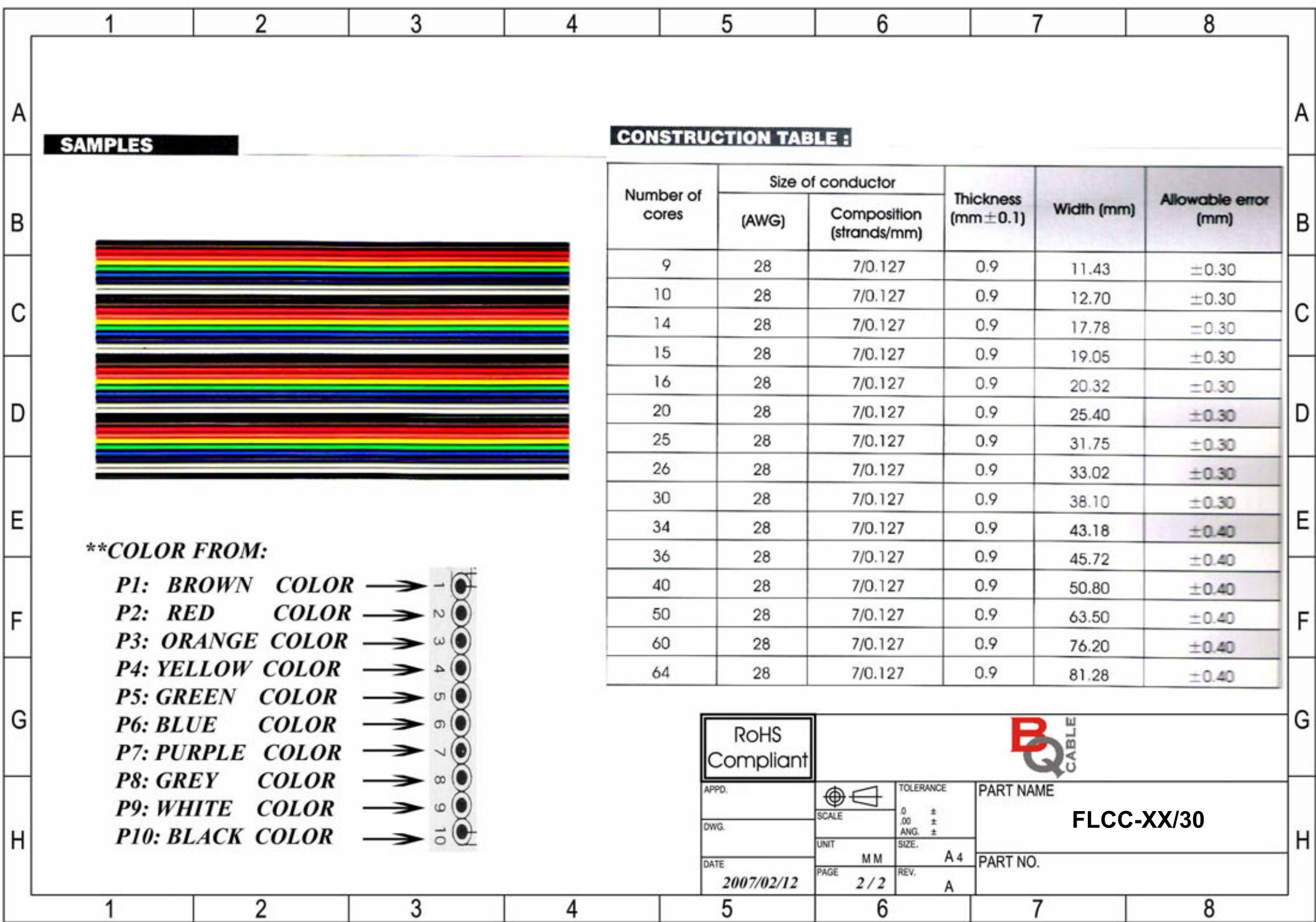
ELECTRONIC CHARACTERISTICS :

Spark test : 2500V	Capacity : 45pF/m
Dielectric strength test : min. 2 KV in 1 minute	Inductance : 1.5 μH/m
Conductor resistance : Max. 237 Ω/km	Impedance : 100Ω
Insulation resistance : Min. 100MΩ/km	Propagation Delay Time : 4.2ns/m

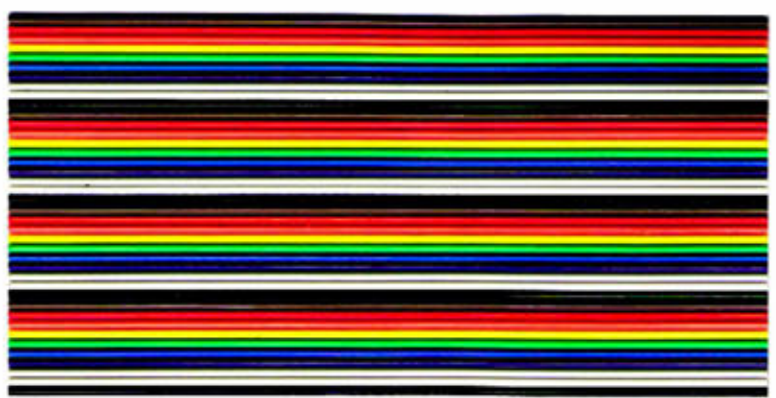
RoHS Compliant



APPD.		TOLERANCE	PART NAME
DWG.		.0 ±	
DATE	UNIT	ANG. ±	PART NO.
2007/02/12	MM	SIZE. A 4	
	PAGE	REV. A	
	2 / 1		



SAMPLES



****COLOR FROM:**

- P1: BROWN COLOR → 1
- P2: RED COLOR → 2
- P3: ORANGE COLOR → 3
- P4: YELLOW COLOR → 4
- P5: GREEN COLOR → 5
- P6: BLUE COLOR → 6
- P7: PURPLE COLOR → 7
- P8: GREY COLOR → 8
- P9: WHITE COLOR → 9
- P10: BLACK COLOR → 10

CONSTRUCTION TABLE :

Number of cores	Size of conductor		Thickness (mm ±0.1)	Width (mm)	Allowable error (mm)
	(AWG)	Composition (strands/mm)			
9	28	7/0.127	0.9	11.43	±0.30
10	28	7/0.127	0.9	12.70	±0.30
14	28	7/0.127	0.9	17.78	±0.30
15	28	7/0.127	0.9	19.05	±0.30
16	28	7/0.127	0.9	20.32	±0.30
20	28	7/0.127	0.9	25.40	±0.30
25	28	7/0.127	0.9	31.75	±0.30
26	28	7/0.127	0.9	33.02	±0.30
30	28	7/0.127	0.9	38.10	±0.30
34	28	7/0.127	0.9	43.18	±0.40
36	28	7/0.127	0.9	45.72	±0.40
40	28	7/0.127	0.9	50.80	±0.40
50	28	7/0.127	0.9	63.50	±0.40
60	28	7/0.127	0.9	76.20	±0.40
64	28	7/0.127	0.9	81.28	±0.40

RoHS Compliant



APPD.		TOLERANCE	PART NAME
DWG.		0.00 ±	
DATE	SCALE	ANG. ±	PART NO.
2007/02/12	UNIT	SIZE. A 4	
	PAGE	REV. A	
	2 / 2		