



CT Meter

For AC Current Measurement When Using Current Transformers

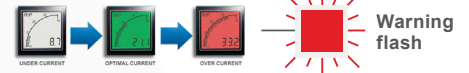
Easy to Use. Easy to Read.

High resolution 5A Input
for use with current transformers

0.5%
Accuracy

40
Segment curved
bar graph display

Programmable backlight
color to alert user



Programmable 4 digit
star-burst display. Custom
messages & annunciators

2

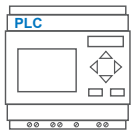
Alarm set points

Programmable
scale

Combined digital and
bar graph display



USB port for custom user settings
via the free easy-to-use software



2 outputs - digital
and analogue

16 Position switch for
selecting standard
configurations

Less than
53mm deep

WIDE
viewing angle

Available in either
POSITIVE
NEGATIVE



Full 4 digit readout for accuracy

Featuring an acclaimed easy-to-read display, combined with easy-to-use programming software and a high resolution input, the CT Meter is the newest addition to the Advanced Panel Meter (APM) product group to measure current.

The CT Meter is designed specifically for use with current transformers. When used with an external current transformer, it can accurately measure up to 10,000 amps. The CT Meter also provides a range of features, such as alarm set-points and three-color dynamic backlighting.

The customizable four-character message display and scalability enable users to tailor the meter to display critical parameters to their desired specifications. The set-points, coupled with the backlighting allows operators to be visually alerted when a parameter is out of range. The two outputs can be used to connect the APM to other systems in the process.

Key Features

Large multi-format display that incorporates:

- 40 segment bar graph display
- Large 4-digit display
- Separate Starburst display area for annunciators, custom messages and alarm information
- Dynamic backlight color

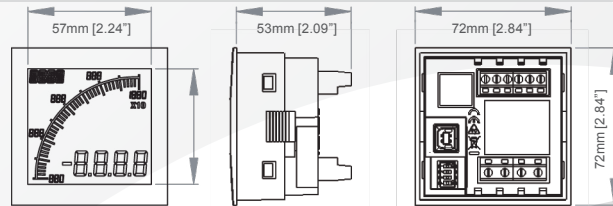
Visibility:

- User-adjustable backlight brightness and colour
- Large display
- Wide viewing angle (horizontal and vertical)
- Custom annunciators

Programmable:

- Display Range (Both Min & Max Values)
- Custom annunciators
- User-selectable backlight color and intensity
- Two independent alarm set-points
- Two independent outputs
- 4-20mA analog monitor output

Dimensions:



Panel cutout: 68mm x 68mm [2.68" x 2.68"] as per DIN43700/IEC61554

INPUT

Range (CT Output Current) 0 - 5A
 Range (via External CT) 0 - 10,000A
 Accuracy 0.5%

CURRENT

0 - 5A
 0 - 10,000A
 0.5%

ENVIRONMENTAL

Temperature - operating
 Temperature - storage
 IP rating (from the front)
 NEMA rating (from the front)

-10 to +60°C
 -40 to +70°C
 IP65
 Type 4 & Type 12

POWER SUPPLY

Nominal Input

12-24VAC or DC

DISPLAY

Number of digits
 Digit height
 Number of message characters
 Backlight colours
 LCD display

4
 12mm [0.47"]
 4
 Red, Green, White
 Positive or Negative

OUTPUTS

Max voltage
 Max current
 Analogue output

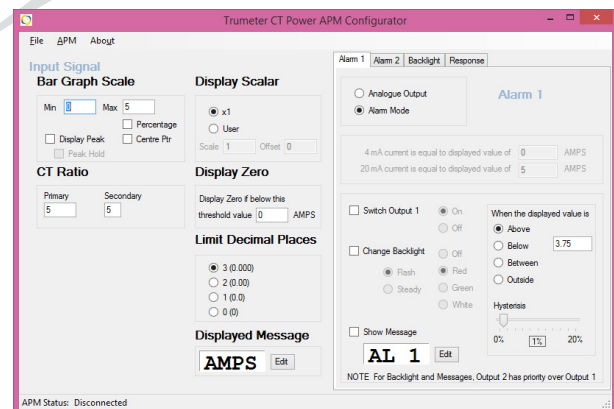
34V
 500mA
 4-20mA

CERTIFICATION

UL, cUL, CE

Easy To Use Software

Just plug into any USB port on your PC, run the freely available APM Configurator application and you're off. No drivers required.



Part Numbers:

APM-CT-APN	APM CT Meter, Positive LCD
APM-CT-APO	APM CT Meter, Positive LCD, With Outputs
APM-CT-ANN	APM CT Meter, Negative LCD
APM-CT-ANO	APM CT Meter, Negative LCD, With Outputs
022128-01	USB Cable

BY REQUEST: Modbus Connectivity

APM-CT-APS	APM CT Meter, Positive LCD with Modbus
APM-CT-ANS	APM CT Meter, Negative LCD with Modbus

Full specifications available online www.trumeter.com/apm

