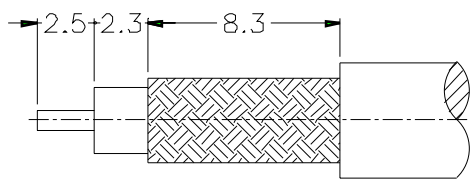
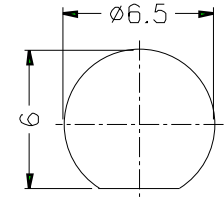


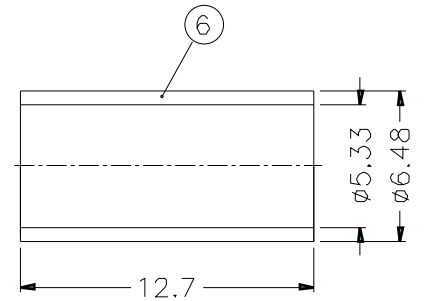
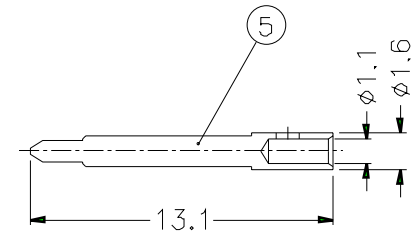
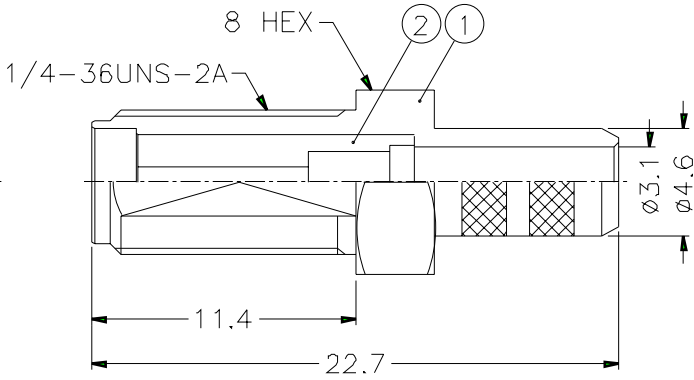
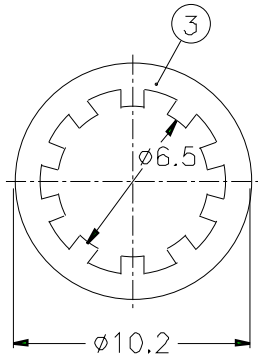
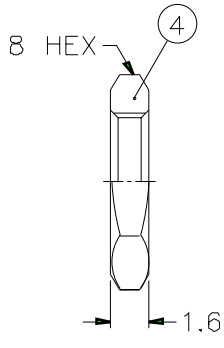
REVISIONS		
ISS	ZONE	DESCRIPTION\PER REQUEST\DATE



RECOMMENDED
CABLE STRIPPING DIM'S
(建議剝線尺寸)



RECOMMENDED
MOUNTING HOLE
(建議架設孔)



- NOTES: FINISH (PLATING THICKNESS IN MICRO-INCHES)
- BRASS PER QQ-B-626
 - BRASS PER QQ-B-613
 - GOLD PL. 3 MIN. THICK OVER NICKEL PL. 100 MIN. THICK OVER COPPER STRIKE
 - GOLD PL. 50 MIN. THICK OVER NICKEL PL. 100 MIN. THICK OVER COPPER STRIKE
 - TEFLON MIL-P-19468

6	FERRULE	COPPER	NOTE 3	1	FR-648/533X 127C
5	CONTACT PIN	NOTE 1	NOTE 4	1	RSMA6111A2-3- 16/11
4	HEX NUT	NOTE 1	NOTE 3	1	HNB-1/4-36X16
3	LOCK WASHER	NOTE 2	NOTE 3	1	LW-102/65X05
2	INSULATOR	NOTE 5	NATURAL	1	SMA7000-2T-50
1	BODY	NOTE 1	NOTE 3	1	SMA7400-1-46/ 31-C
NO.	DESCRIPTION	MATERIAL	FINISH	Q'TY	DRAWING NO.

DIMENSIONS ARE IN MILLIMETERS	
UNLESS OTHERWISE SPECIFIED TOLERANCES	
0.5-6	= ±0.2
6-30	= ±0.4
30-120	= ±0.6
120-315	= ±1
315-1000	= ±1.6
1000-2000	= ±2.4

PART NO.	
APPROVED	DATE
CHECKED	DATE
DRAWN	DATE

Amphenol - Kai Jack	
TAINAN TAIWAN	
TITLE	SMA REVERSE POLARITY BULKHEAD CRIMP JACK (FOR RG-58C/U, 58/U)
DRAWING NO	KJ-RSMA6411A1-3GT50G-58U-50
FILE NO.	F:\DWG\RSMA\6411A1\58U-50\3GT50G