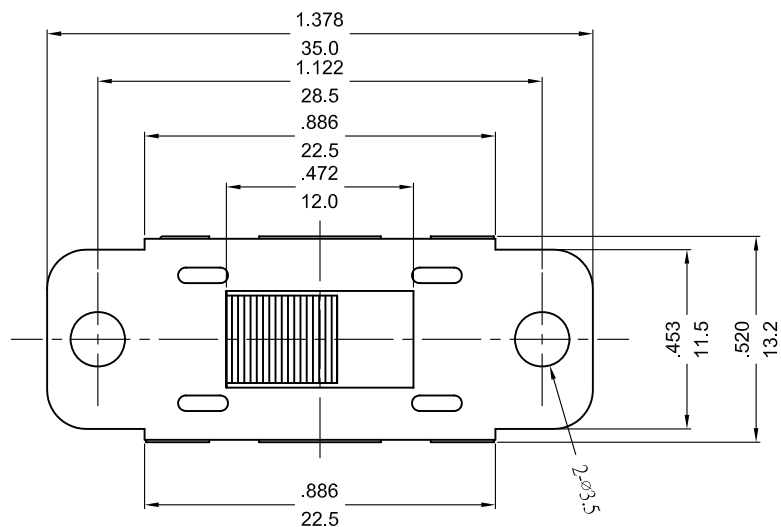


嘉尼企業股份有限公司 CANAL ELECTRONIC CO.,LTD.



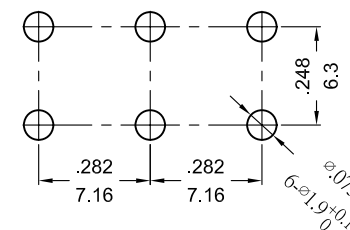
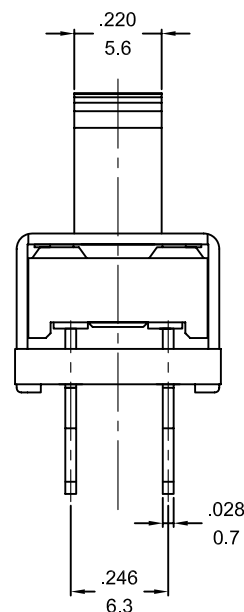
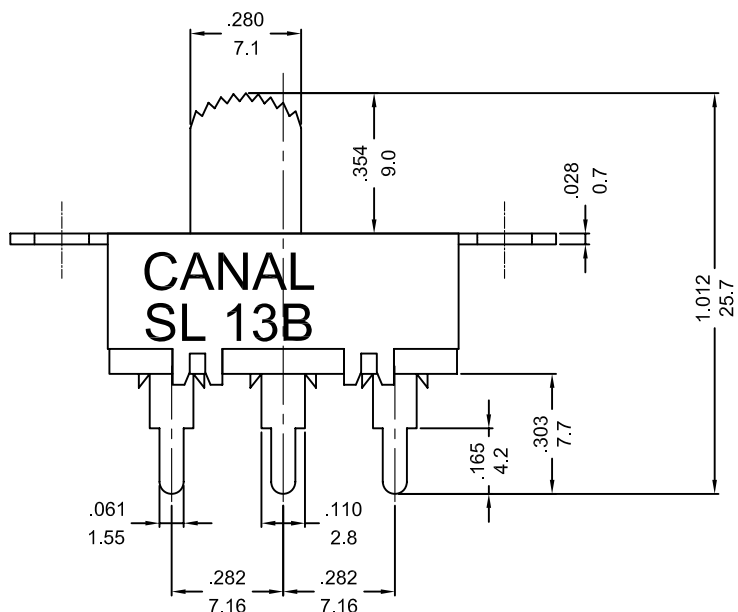
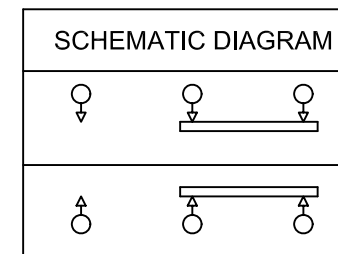
SLIDE SWITCH MODEL : SL13B SERIES

RATING:3A 250VAC,6A 125VAC (UL/CUL)

CONTACT RESISTANCE:20mΩ INITIAL (MAX)

INSULATION RESISTANCE:500VDC - 100MΩ(MIN).

DIELECTRIC VOLTAGE-WITHSTAND: 1,000VAC FOR 1 MINUTE.



P.C. BOARD HOLE

NOTES:TOLERANCES UNLESS OTHERWISE SPECIFIED:± .012/0.3(in/mm).

REVISION	DESCRIPTION	REVISED BY	TOLERANCES		ANGLE $\frac{1}{2}^\circ$		UNIT	mm	PART NAME	SL13B SPEC DRAWING	DWG NO
			DRAWN BY	DESIGNED BY	SCALE						
④			陳磊	聶明	2/1						
③											
②			陳磊		2017.02.06						
①	首次出圖	陳磊			2017.02.06						
									PART NO	SL13B-022(BHC1)0	S6941A