

TECHNICAL SPECIFICATION

Universal Limit Switch – Series CM-1xxx

Description

Limit switches of the CM series are used mainly as replacement of the limit switches of the TZ series or for setting the movement limits of some types of equipment. The switches are supplied with screw cable terminals. They can work at resistance loads as high as 15A, and are of single circuit type. Limit switches have high accuracy and can operate at wide variety of speeds.

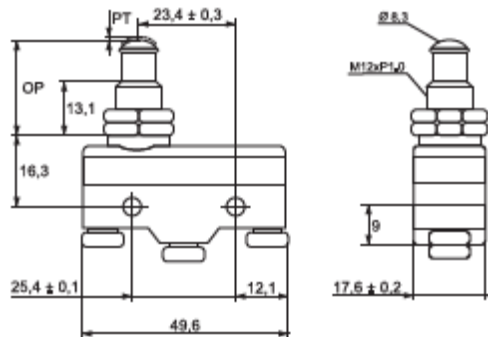
Technical data

- Dielectric Strength: 1000V AC
- Insulation Resistance: 100m Ω min. (at 500VDC)
- Contact Resistance: 5m Ω
- Electrical Life (No. of cycles): 500 000 with non-inductive load
- Mechanical Life (No. of cycles): 5 000 000
- Operating frequency: 20 electrical operations/ minute
- Operating speed: 0.1mm/s to 1.0m/s
- Rated voltage: 230V
- IP code: IP65
- Fastening strength of terminals: 6-8kgf/cm

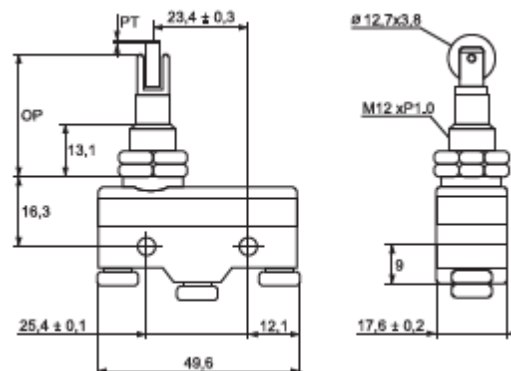
Type of contact system



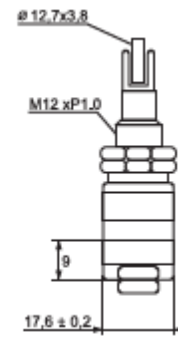
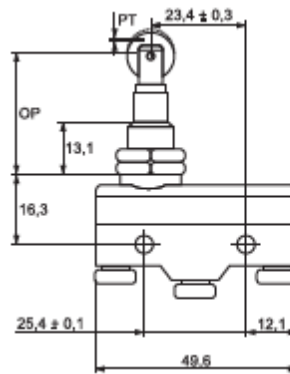
Variants and dimensions



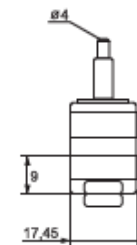
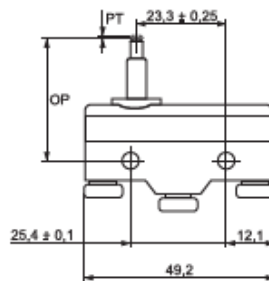
| Type | Type of the head | Power of starting (g) | Power of release (g) | Switching position | General movement | Rated current | Packing / Box (pcs) | Catalogue number |
|---------|------------------|-----------------------|----------------------|--------------------|------------------|----------------------------|---------------------|------------------|
| CM-1307 | metal cylinder | 350 | 114 | 0.4mm | 5.5mm | 15A-active 5A-inductive | 1 / 480 | 468105 |



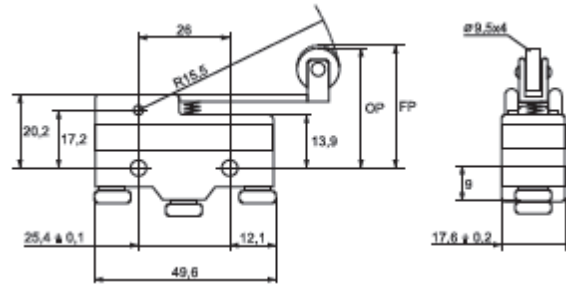
| Type | Type of the head | Power of starting (g) | Power of release (g) | Switching position | General movement | Rated current | Packing / Box (pcs) | Catalogue number |
|---------|------------------------------------|-----------------------|----------------------|--------------------|------------------|----------------------------|---------------------|------------------|
| CM-1309 | Cylinder and transverse metal roll | 350 | 114 | 0.4mm | 5.5mm | 15A-active 5A-inductive | 1 / 480 | 468106 |



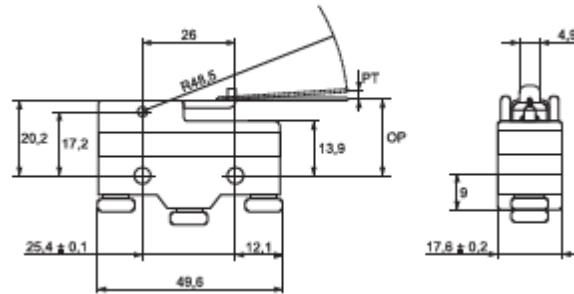
| Type | Type of the head | Power of starting (g) | Power of release (g) | Switching position | General movement | Rated current | Packing / Box (pcs) | Catalogue number |
|---------|----------------------------------|-----------------------|----------------------|--------------------|------------------|----------------------------|---------------------|------------------|
| CM-1308 | Cylinder longitudinal metal roll | 350 | 114 | 0.4mm | 5.5mm | 15A-active 5A-inductive | 1 / 480 | 468109 |



| Type | Type of the head | Power of starting (g) | Power of release (g) | Switching position | General movement | Rated current | Packing / Box (pcs) | Catalogue number |
|---------|------------------|-----------------------|----------------------|--------------------|------------------|----------------------------|---------------------|------------------|
| CM 1305 | Metal cylinder | 350 | 114 | 0.4mm | 1.6mm | 15A-active 5A-inductive | 1 / 480 | 468110 |



| Type | Type of the head | Power of starting (g) | Power of release (g) | Switching position | General movement | Rated current | Packing / Box (pcs) | Catalogue number |
|---------|---------------------|-----------------------|----------------------|--------------------|------------------|----------------------------|---------------------|------------------|
| CM-1703 | Extended metal roll | 160 | 22 | 7.1mm | 1.02mm | 15A-active 5A-inductive | 1 / 480 | 468113 |



| Type | Type of the head | Power of starting (g) | Power of release (g) | Switching position | General movement | Rated current | Packing / Box (pcs) | Catalogue number |
|---------|------------------|-----------------------|----------------------|--------------------|------------------|----------------------------|---------------------|------------------|
| CM-1705 | Spring lever | 10 | 3 | 20mm | 5.6mm | 15A-active 5A-inductive | 1 / 480 | 468117 |

Standards

EN 60947-1

EN 60947-5-1

