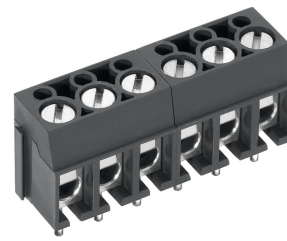





# AK100/..DS-5.0-V-GREY



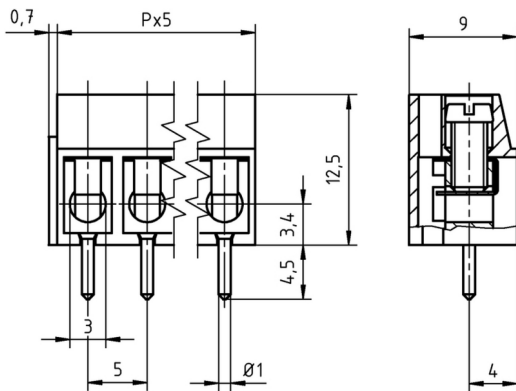
## Technical Data

| Wire sizes                |                     | Insulating Material                |                 |
|---------------------------|---------------------|------------------------------------|-----------------|
| Solid min                 | 0.2 mm <sup>2</sup> | Material                           | PA 6.6          |
| Solid max                 | 2.5 mm <sup>2</sup> | Flammability Class                 | UL 94 V-0       |
| Stranded (flexible) min   | 0.2mm <sup>2</sup>  | <b>Temperatures</b>                |                 |
| Stranded (flexible) max   | 2.5 mm <sup>2</sup> | Operating Temperature              | -30 °C - 105 °C |
| Stranded with Ferrule min | 0.2 mm <sup>2</sup> | Store Temperature                  | -40 °C - 105 °C |
| Stranded with Ferrule max | 2.5 mm <sup>2</sup> | <b>Wave Soldering Process</b>      |                 |
| <b>Dimensions</b>         |                     | Soldering Temperature, recommended | 265 °C          |
| Stripped Length           | 7.0 mm              | Peak Soldering Time, recommended   | 3-4 s           |
| PCB Hole Diameter         | 1.3 mm              | <b>Reflow Process</b>              |                 |
| <b>Materials</b>          |                     | Soldering Temperature, recommended | -               |
| Clamp                     | Brass               | Peak Soldering Time, recommended   | -               |
| Wire Guard                | Stainless Steel     |                                    |                 |
| Screw                     | Steel               |                                    |                 |

## Colours

|   |                 |
|---|-----------------|
|    | GREY, RAL 7016  |
|   | BLACK, RAL 9011 |
|  | BLUE, RAL 5015  |




Colours according to RAL, there may be variations on colour due to production conditions. Special colours on request.



## Order Data (Spacing 5.0 mm)

| Poles | Width (mm) | Article Designation   | Article Number | PU  |
|-------|------------|-----------------------|----------------|-----|
| 2     | 10.70      | AK100/2DS-5.0-V-GREY  | 50100020121 G  | 250 |
| 3     | 15.70      | AK100/3DS-5.0-V-GREY  | 50100030121 G  | 250 |
| 4     | 20.70      | AK100/4DS-5.0-V-GREY  | 50100040121 G  | 250 |
| 5     | 25.70      | AK100/5DS-5.0-V-GREY  | 50100050121 G  | 250 |
| 6     | 30.70      | AK100/6DS-5.0-V-GREY  | 50100060121 F  | 200 |
| 7     | 35.70      | AK100/7DS-5.0-V-GREY  | 50100070121 F  | 200 |
| 8     | 40.70      | AK100/8DS-5.0-V-GREY  | 50100080121 E  | 100 |
| 9     | 45.70      | AK100/9DS-5.0-V-GREY  | 50100090121 E  | 100 |
| 10    | 50.70      | AK100/10DS-5.0-V-GREY | 50100100121 E  | 100 |
| 11    | 55.70      | AK100/11DS-5.0-V-GREY | 50100110121 E  | 100 |
| 12    | 60.70      | AK100/12DS-5.0-V-GREY | 50100120121 E  | 100 |

## Accessoires

| Figure   | Designation  | Article Number       |
|--|--|----------------------|
|    | Bridge, 2-pole, insulated, BRI/2-5.0/5.08-LIGHT GREY | Art.-Nr. 50000000006 |
|   | Bridge, 3-pole, insulated, BRI/3-5.0/5.08-LIGHT GREY | Art.-Nr. 50000000007 |
|  | Bridge, 2-pole, BR/2-5.0/5.08-L7.0                   | Art.-Nr. 50000000008 |

See pages 282 ff for detail and general accessories and see pages 12/13 concerning services.

## Ratings

| UseGroup        | cRU <sup>®</sup> US |           |         | VDE       |   |
|-----------------|---------------------|-----------|---------|-----------|---|
|                 | B                   | C         | D       |           |   |
| Rated Voltage   | 300 V               | -         | 300 V   | 250 V     |   |
| Rated Current   | 20 A                | -         | 10 A    | 24 A      |   |
| Rated Wire Size |                     |           |         | min       | max                                     |
|                 | - solid             | AWG 22-12 | -       | AWG 22-12 | 0.5 mm <sup>2</sup> 2.5 mm <sup>2</sup> |
|                 | -stranded           | AWG 22-12 | -       | AWG 22-12 | 0.5 mm <sup>2</sup> 2.5 mm <sup>2</sup> |
| Torque          | 0.45 Nm             | -         | 0.45 Nm | 0.50 Nm   |   |
| Screw Size      | M3                  | -         | M3      | M3        |   |
| Test Voltage    | 1.60 kV             | -         | 1.60 kV | 2.0 kV    |   |