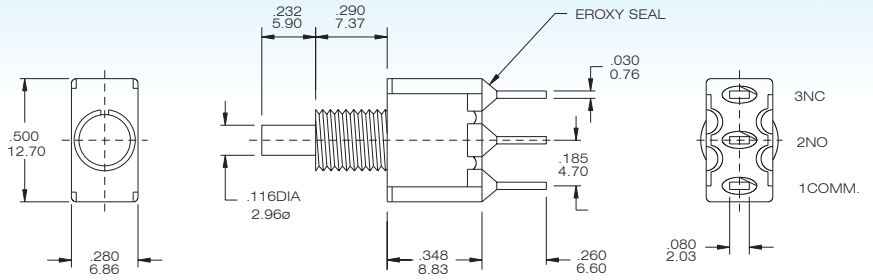
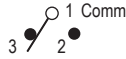




SPDT



| Model No. | Switching position | |
|-------------|--------------------|-----|
| P8701 | on | Mom |
| Term. Comm. | 1-3 | 1-2 |

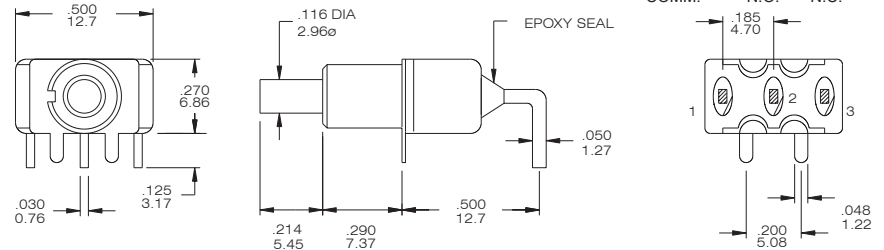
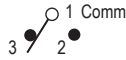


P8701-FBR-E

SPDT

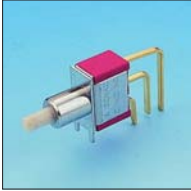


| Model No. | Switching position | |
|-------------|--------------------|-----|
| P8701-A4 | on | Mom |
| Term. Comm. | 1-3 | 1-2 |

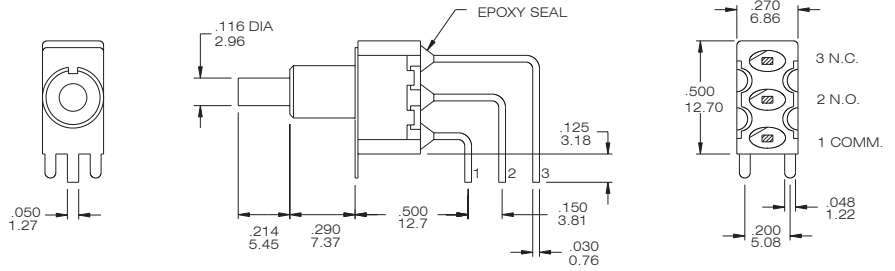
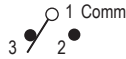


P8701-A4-NR-E

SPDT



| Model No. | Switching position | |
|-------------|--------------------|-----|
| P8701-A5 | on | Mom |
| Term. Comm. | 1-3 | 1-2 |

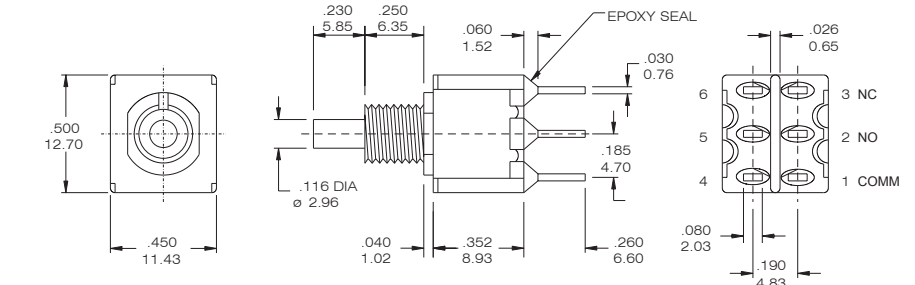


P8701-A5-NR-E

DPDT



| Model No. | Switching position | |
|-------------|--------------------|------------|
| P8702 | on | Mom |
| Term. Comm. | 1-3 4-6 | 1-2 4-5 |

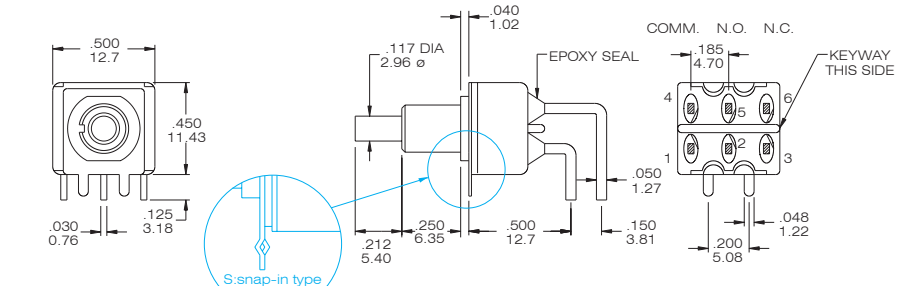
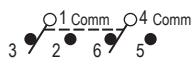


P8702-F4BR-E

DPDT

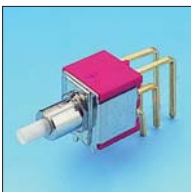


| Model No. | Switching position | |
|-------------|--------------------|------------|
| P8702-A4 | on | Mom |
| Term. Comm. | 1-3 4-6 | 1-2 4-5 |

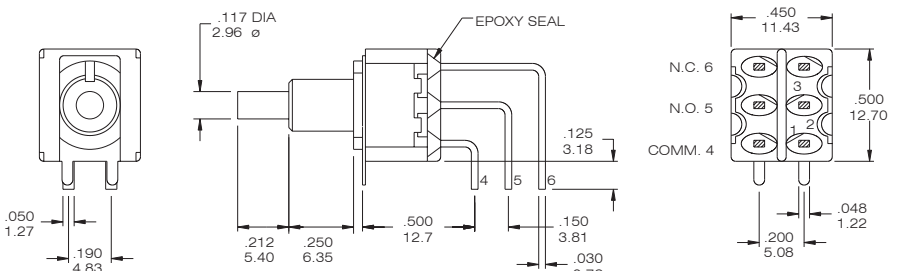


P8702-A4-N4R-E/ P8702-A4-N4R-E-S

DPDT



| Model No. | Switching position | |
|-------------|--------------------|------------|
| P8702-A5 | on | Mom |
| Term. Comm. | 1-3 4-6 | 1-2 4-5 |



P8702-A5-N4R-E

INDEX

TOGGLE

ROCKER

SLIDE

PUSH BUTTON

DIP

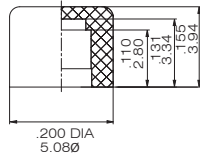
TACT



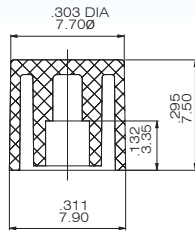
Cap and Actuator Option

Cap color Option

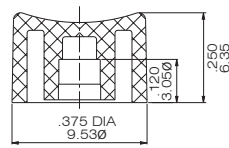
CV



CV1

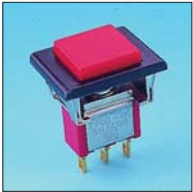


CV2

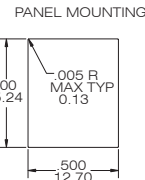
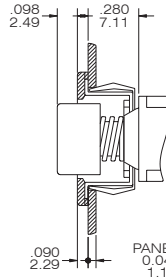
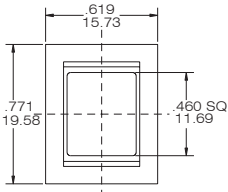


| CAP & ACTUATOR OPTIONS | |
|------------------------|-------------|
| 1 | White |
| 2 | Black(Std.) |
| 3 | Red |
| 4 | Orange |
| 5 | Yellow |
| 6 | Green |
| 7 | Blue |
| 9 | Gray |

INDEX



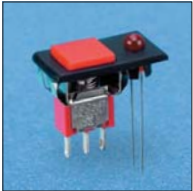
F22A



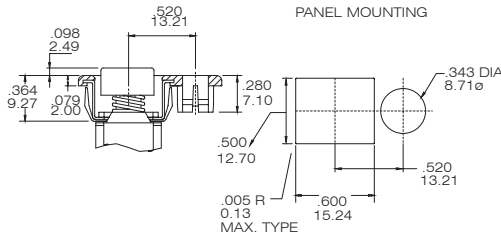
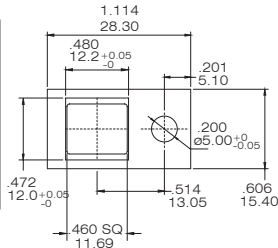
P870 * -F22A- * -BR-E

TOGGLE

ROCKER



F32A

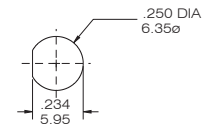
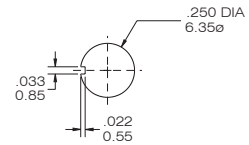


P870 * -F32A- * -BQ-E

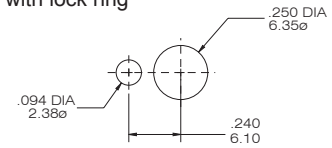
SLIDE

Panel Mounting

without lock ring



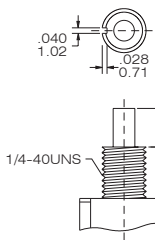
with lock ring



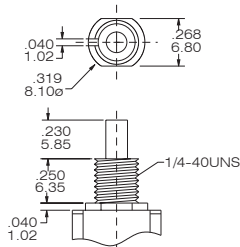
Bushing Option

PUSH BUTTON

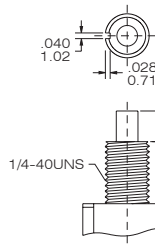
F thd.
N non-thd.
(only for SPDT)



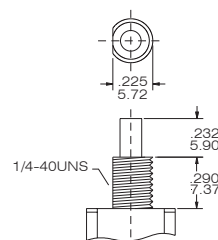
F4 thd.
N4 non-thd.



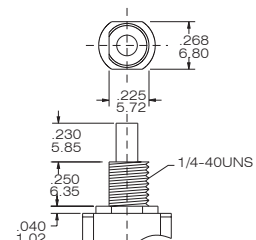
E thd.
(only for SPDT)



F8 thd.
N8 non-thd.
(only for SPDT)



F9 thd.
N9 non-thd.



DIP

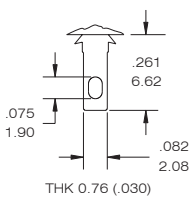
TERMINAL OPTION (ONLY FOR THE STRAGHT TYPE)

TERMINAL SEAL OPTION

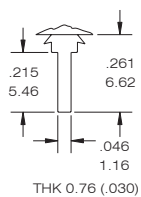
RUBBER HOOD

TACT

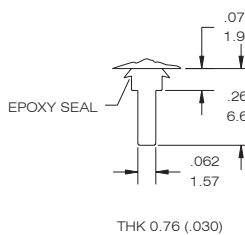
B STD



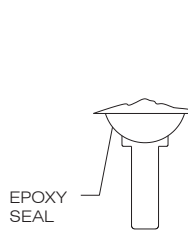
C PRINTED CIRCUIT



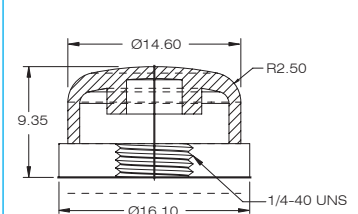
D QUICK CONNECT



E TERMINAL SEAL



E4





CONTACT MATERIAL OPTIONS

| CODE | CONTACT MATERIAL | TERMINAL MATERIAL | RATING |
|------|--------------------------------|--------------------------------|---|
| Q | Silver plated | Silver plated | 1A @ 120V AC or 28 V DC; |
| R | Gold plated over nickel plated | Gold plated over nickel plated | 0.4 VA MAX@ 20V AC or DC MAX |
| G | Gold plated over silver plated | Gold plated over silver plated | 0.4 VA MAX @ 20 V AC or DC MAX or 1 A @ 120V AC or 28 V DC; |

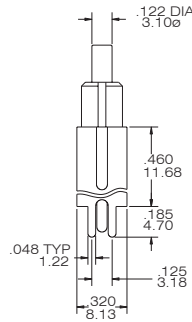
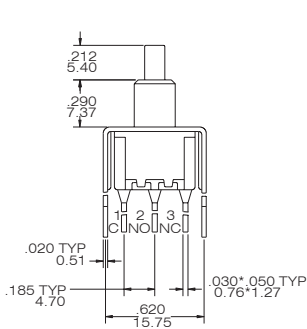
VERTICAL SUPPORT BRACKET OPTION

(only apply the straight type terminal-Please modify the terminal option is "c" code)

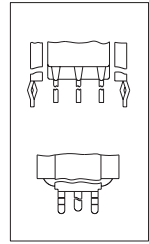
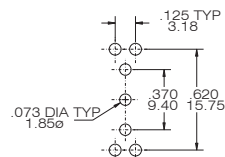
S20/V20



SPDT



P.C. MOUNTING



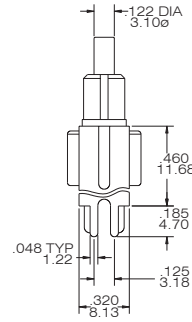
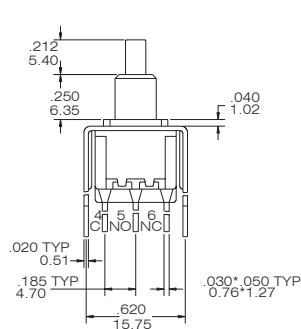
SNAP-IN V 20

P8701-NCR-E-S20

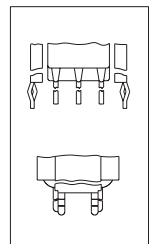
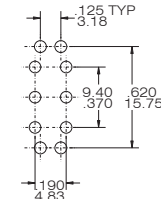
S20/V20



DPDT



P.C. MOUNTING

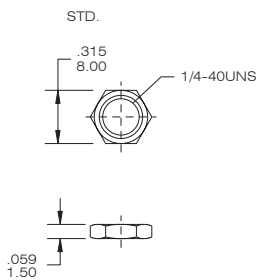


SNAP-IN V 20

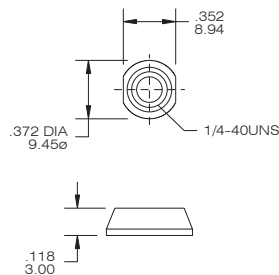
P8702-N4CR-E-S20

The hard ware of T80-P push button switches

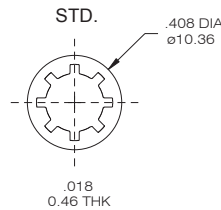
NUT



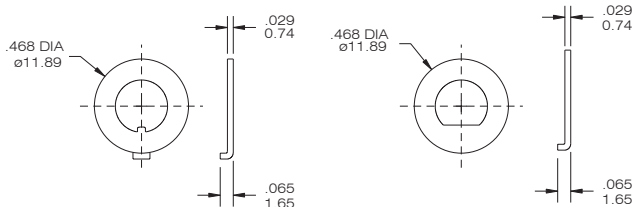
DRESS NUT



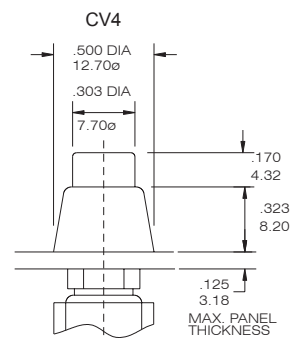
LOCK WASHER



LOCKING RING



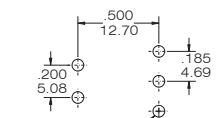
DRESS NUT & CAP



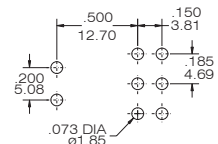
To order dress nut only.

The P.C.B mounting Dimension

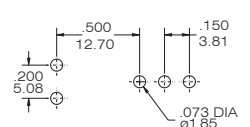
P8701-A4



P8702-A4



P8701-A5



P8702-A5

