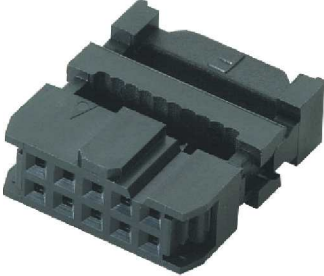


# Ninigi

## D A T A S H E E T

### AWP-10 IDC SOCKET PITCH 2.54 MM



#### Specification:

- 1) Operating Temperature: 0°C ~ 85°C
- 2) Contact Resistance: 20 mW max. (initial)
- 3) Insulation Resistance: 1000 MW min
- 4) Dielectric Withstanding Voltage: 1000 VAC per minute

#### AWP-10G

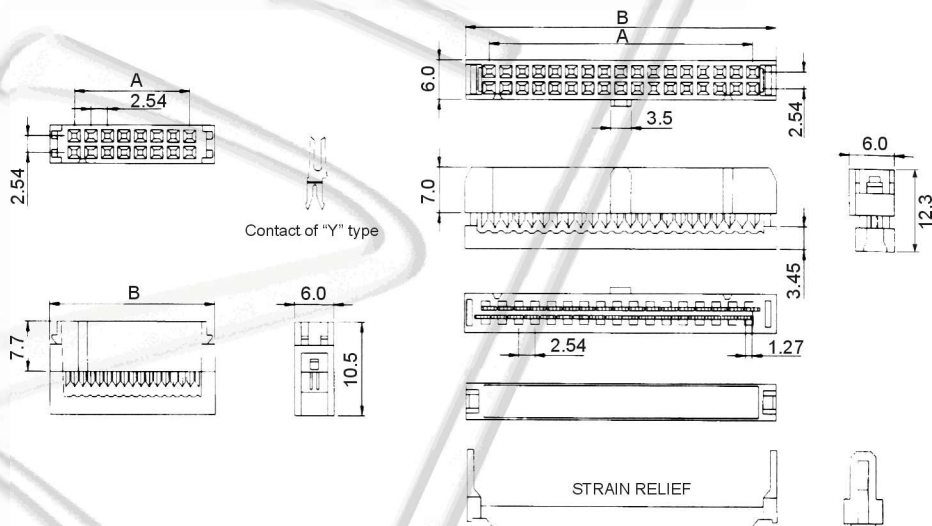


#### NO. OF CONTACTS (N)

10, 14, 16, 20, 26, 30, 34, 40, 50, 60, 64

#### HOUSING COLOUR

G gray  
omitted when standard colour (black)



$$A = 2.54 \times (N-1)$$

$$B = 2.54 \times (N-1) + 7.24$$