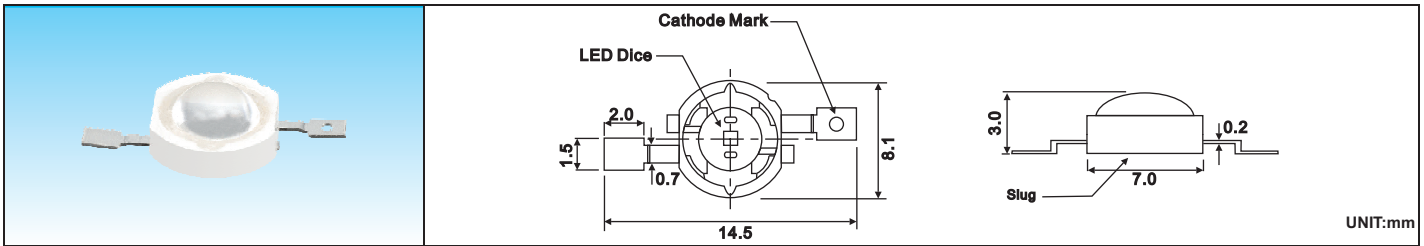




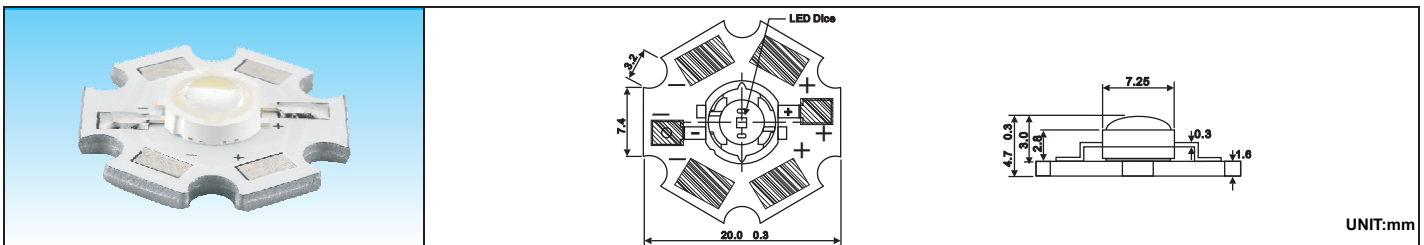
High Power 5W For Lambertian LEDs

IF=1400mA Ta=25°C

Device No	Color		Wavelength(nm)		VF Typical (V)	Brightness(lm) IV	View Angle 2θ 1/2
	Emitter	Lens	λ p	λ d			



HPB8C-43K5G	Green	Water clear	520	525	3.8	160	120	
HPB8C-44K5Y	Yellow		595	590	2.3	120		
HPB8C-45K5R	Red		635	625	2.3	136		
HPB8C-48K5BF	Blue		462	465	3.8	96		
HPB8C-48K5BG					4.7	92		
HPB8C-49K5WF	Pure White		6000°K			3.8		262
HPB8C-49K5WGA						4.7		300
HPB8C-49K5WGB						4.6		318
HPB8C-49K5YWF	Warm White		3300°K			3.8		232
HPB8C-49K5YWGA						4.7		265
HPB8C-49K5YWGB						4.6		280



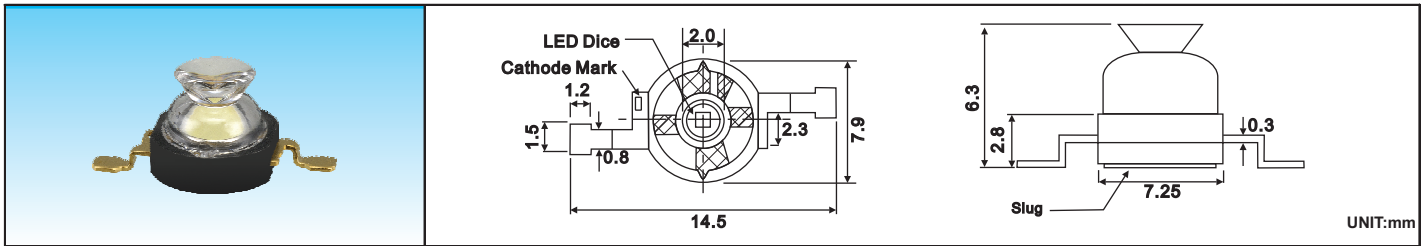
HPB8C-43K5G/WPCB	Green	Water clear	520	525	3.8	160	120	
HPB8C-44K5Y/WPCB	Yellow		595	590	2.3	120		
HPB8C-45K5R/WPCB	Red		635	625	2.3	136		
HPB8C-48K5BF/WPCB	Blue		462	465	3.8	96		
HPB8C-48K5BG/WPCB					4.7	92		
HPB8C-49K5WF/WPCB	Pure White		6000°K			3.8		262
HPB8C-49K5WGA/WPCB						4.7		300
HPB8C-49K5WGB/WPCB						4.6		318
HPB8C-49K5YWF/WPCB	Warm White		3300°K			3.8		232
HPB8C-49K5YWGA/WPCB						4.7		265
HPB8C-49K5YWGB/WPCB						4.6		280

High Power 5W For Side Emitting LEDs

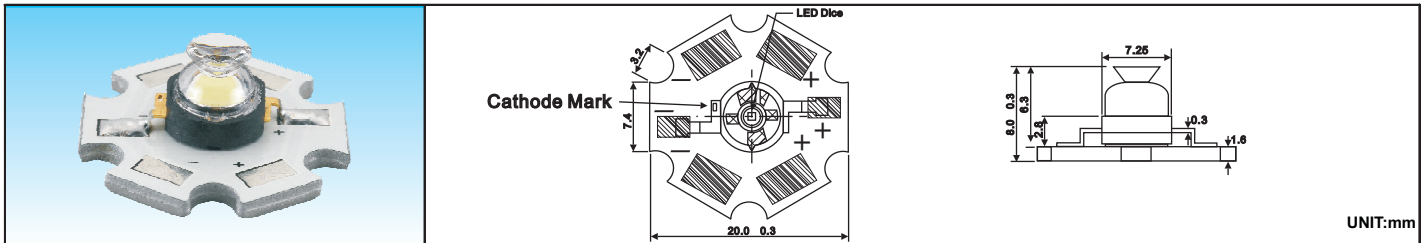


IF=1400mA Ta=25°C

Device No	Color		Wavelength(nm)		VF	Brightness(lm)	View
	Emitter	Lens	λ_p	λ_d	Typical (V)	IV	Angle 2θ 1/2



HPS8b-43K5G	Green	Water clear	520	525	3.8	146	±80	
HPS8b-44K5Y	Yellow		595	590	2.3	108		
HPS8b-45K5R	Red		635	625	2.3	123		
HPS8b-48K5BF	Blue		462	465	3.8	86		
HPS8b-48K5BG					4.7	82		
HPS8b-49K5WF	Pure White		6000°K			3.8		235
HPS8b-49K5WGA						4.7		270
HPS8b-49K5WGB						4.6		286
HPS8b-49K5YWF	Warm White		3300°K			3.8		208
HPS8b-49K5YWGA						4.7		238
HPS8b-49K5YWGB						4.6		252



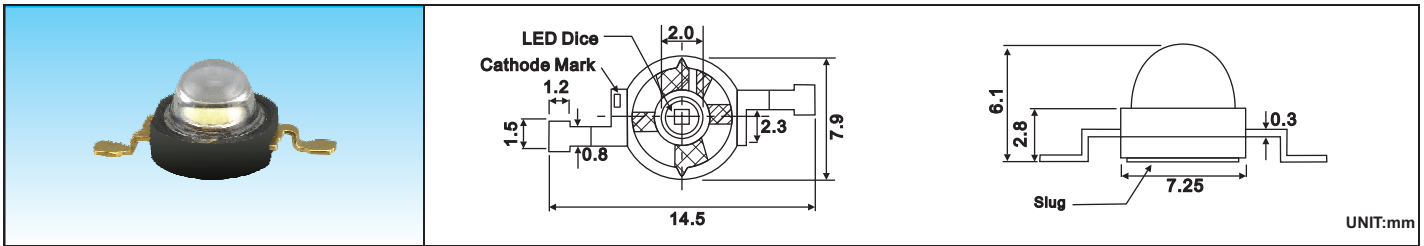
HPS8b-43K5G/WPCB	Green	Water clear	520	525	3.8	146	±80	
HPS8b-44K5Y/WPCB	Yellow		595	590	2.3	108		
HPS8b-45K5R/WPCB	Red		635	625	2.3	123		
HPS8b-48K5BF/WPCB	Blue		462	465	3.8	86		
HPS8b-48K5BG/WPCB					4.7	82		
HPS8b-49K5WF/WPCB	Pure White		6000°K			3.8		235
HPS8b-49K5WGA/WPCB						4.7		270
HPS8b-49K5WGB/WPCB						4.6		286
HPS8b-49K5YWF/WPCB	Warm White		3300°K			3.8		208
HPS8b-49K5YWGA/WPCB						4.7		238
HPS8b-49K5YWGB/WPCB						4.6		252



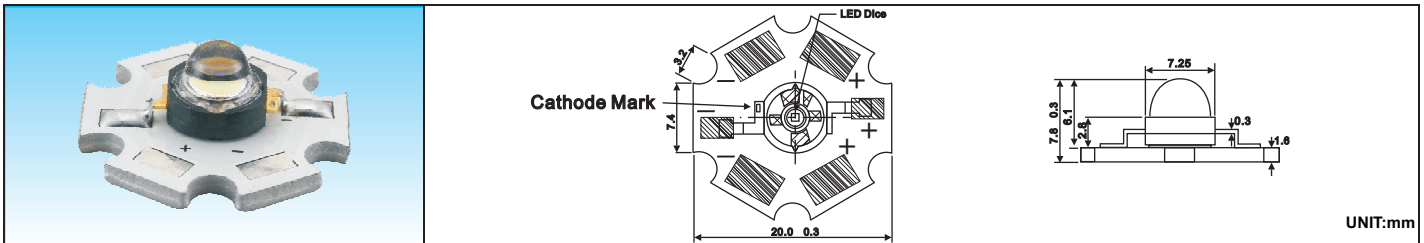
High Power 5W For Focusing LEDs

IF=1400mA Ta=25°C

Device No	Color		Wavelength(nm)		VF Typical (V)	Brightness(lm) IV	View Angle 2θ 1/2
	Emitter	Lens	λ p	λ d			



HPD8b-43K5G	Green	Water clear	520	525	3.8	160	45	
HPD8b-44K5Y	Yellow		595	590	2.3	120		
HPD8b-45K5R	Red		635	625	2.3	136		
HPD8b-48K5BF	Blue		462	465	3.8	96		
HPD8b-48K5BG					4.7	92		
HPD8b-49K5WF	Pure White		6000°K			3.8		262
HPD8b-49K5WGA						4.7		300
HPD8b-49K5WGB						4.6		318
HPD8b-49K5YWF	Warm White		3300°K			3.8		232
HPD8b-49K5YWGA						4.7		265
HPD8b-49K5YWGB		4.6				280		



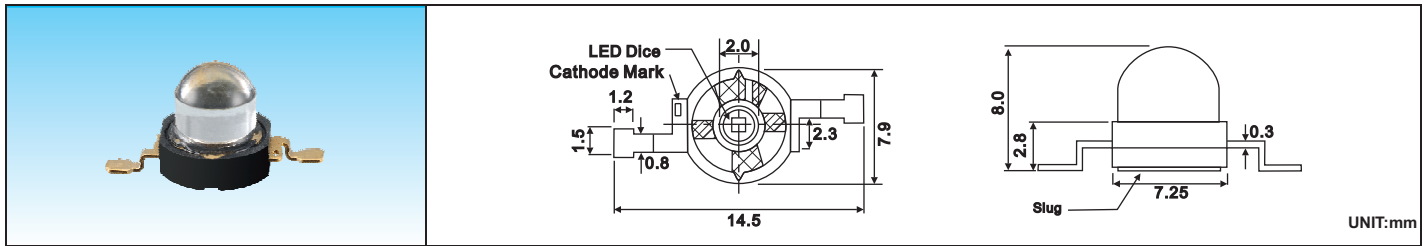
HPD8b-43K5G/WPCB	Green	Water clear	520	525	3.8	160	45	
HPD8b-44K5Y/WPCB	Yellow		595	590	2.3	120		
HPD8b-45K5R/WPCB	Red		635	625	2.3	136		
HPD8b-48K5BF/WPCB	Blue		462	465	3.8	96		
HPD8b-48K5BG/WPCB					4.7	92		
HPD8b-49K5WF/WPCB	Pure White		6000°K			3.8		262
HPD8b-49K5WGA/WPCB						4.7		300
HPD8b-49K5WGB/WPCB						4.6		318
HPD8b-49K5YWF/WPCB	Warm White		3300°K			3.8		232
HPD8b-49K5YWGA/WPCB						4.7		265
HPD8b-49K5YWGB/WPCB		4.6				280		

High Power 5W For Focusing LEDs

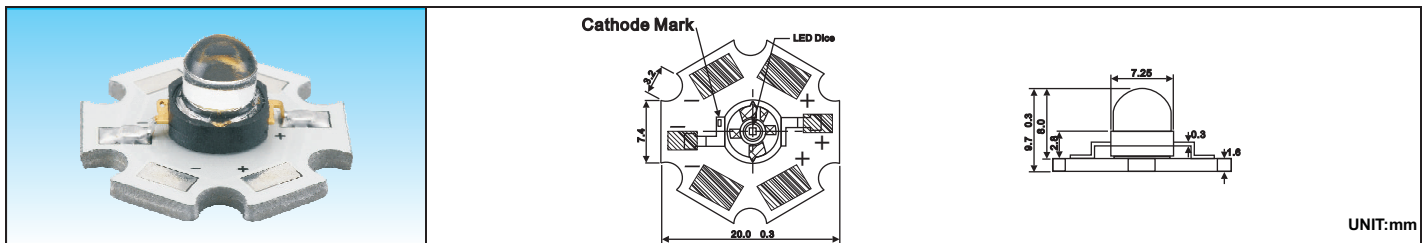


IF=1400mA Ta=25°C

Device No	Color		Wavelength(nm)		VF	Brightness(lm)	View
	Emitter	Lens	λ_p	λ_d	Typical (V)	IV	Angle 2θ 1/2



HPE8b-43K5G		Green	Water clear	520	525	3.8	160	25
HPE8b-44K5Y		Yellow		595	590	2.3	120	
HPE8b-45K5R		Red		635	625	2.3	136	
HPE8b-48K5BF		Blue		462	465	3.8	96	
HPE8b-48K5BG						4.7	92	
HPE8b-49K5WF		Pure White		6000°K		3.8	262	
HPE8b-49K5WGA						4.7	300	
HPE8b-49K5WGB						4.6	318	
HPE8b-49K5YWF		Warm White		3300°K		3.8	232	
HPE8b-49K5WGA						4.7	265	
HPE8b-49K5WGB						4.6	280	



HPE8b-43K5G/WPCB		Green	Water clear	520	525	3.8	160	25
HPE8b-44K5Y/WPCB		Yellow		595	590	2.3	120	
HPE8b-45K5R/WPCB		Red		635	625	2.3	136	
HPE8b-48K5BF/WPCB		Blue		462	465	3.8	96	
HPE8b-48K5BG/WPCB						4.7	92	
HPE8b-49K5WF/WPCB		Pure White		6000°K		3.8	262	
HPE8b-49K5WGA/WPCB						4.7	300	
HPE8b-49K5WGB/WPCB						4.6	318	
HPE8b-49K5YWF/WPCB		Warm White		3300°K		3.8	232	
HPE8b-49K5WGA/WPCB						4.7	265	
HPE8b-49K5WGB/WPCB						4.6	280	