

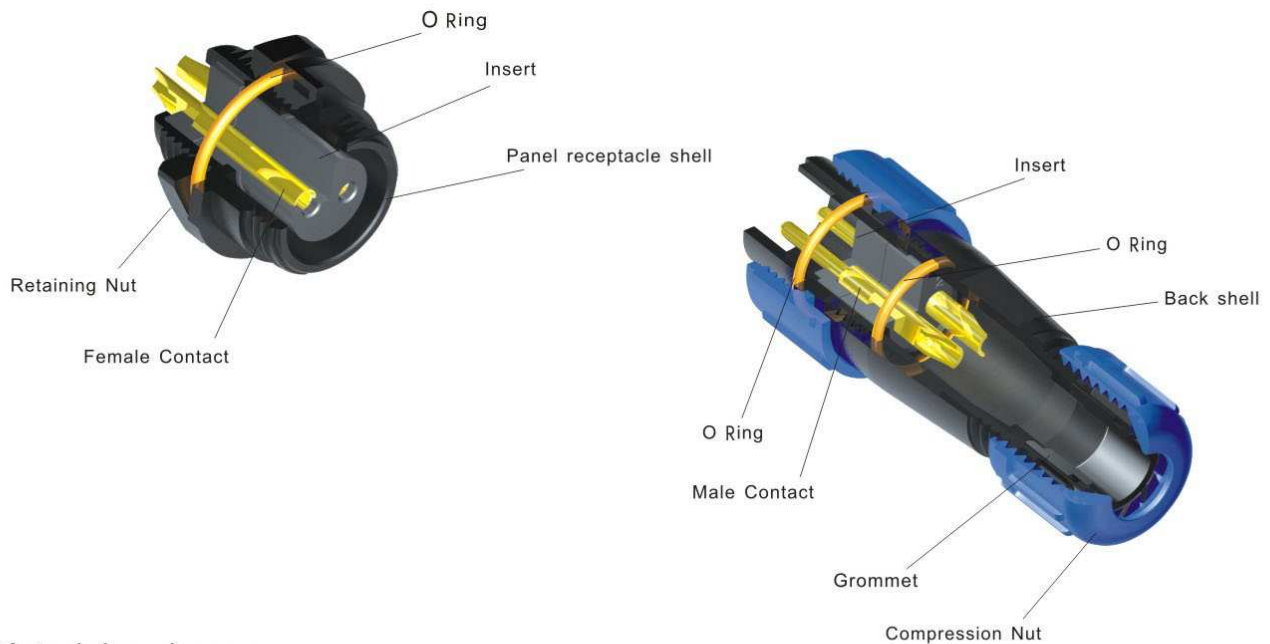
CIRCULAR CONNECTORS SERIES

SP
13、21



IP68 Plastic Connectors with threaded coupling

SP series circular connector meets the requirements of IP68, it works reliably indoor, outdoor and under water harsh environment applications. Patent pending



Material and spec

Back shell	V-0	Fire resistance	V-0
Insert material	Temperature range 260°C		
Contact material	brass		
Contact plating	gold over nickel		
Contact termination style	solder		
Cable OD range	SP13 Type I 3-6.5mm	SP13 Type II 4-8mm	SP21 6-12mm
IP rating	IP68		
Mating cycle	> minimum 500 times		
Temperature range	-40+85°C		
Humidity	+40°C 95±3%		
Vibration	10~500Hz	100m/S	
Shock	40~80/min	250m/S	

SP21 Series

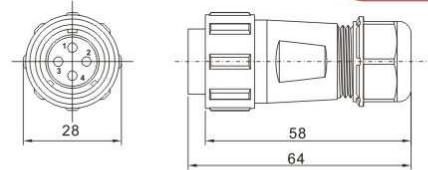
**SP
21**



SP2110/P ❖

SP2110/S ❖

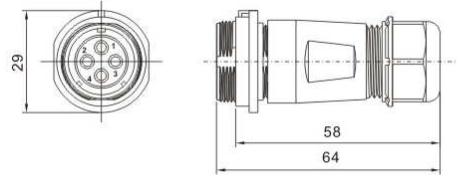
This item mates with
SP2111, SP2112, SP2113
Threaded coupling
Solder termination



SP2111/P ❖

SP2111/S ❖

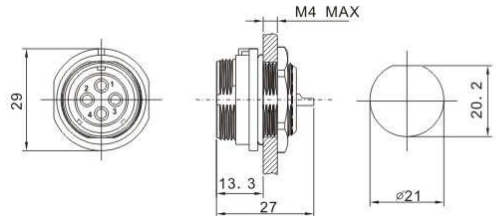
This item mates with
SP2110
Threaded coupling
Solder termination



SP2112/P ❖

SP2112/S ❖

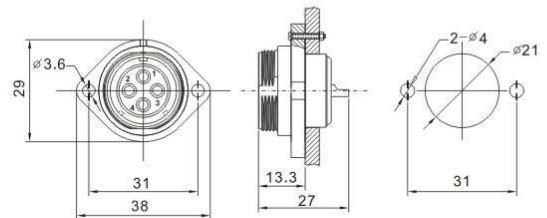
This item mates with
SP2110,
"D" hole with a nut on
the back
Solder termination



SP2113/P ❖

SP2113/S ❖

This item mates with
SP2110,
Install by screws
Solder termination



Insert configuration, face view of female

Pin Number	2	3	4	5	7	9	12
Insert configuration							
	2pole	3pole	4pole	5pole	7pole	9pole	12pole
Rated current A	30A	30A	30A	15A	15A	5A	5A
Size and No. of contact	∅ 3X2	∅ 3X3	∅ 3X4	∅ 2X5	∅ 2X7	∅ 1X9	∅ 1X12
Rated voltage (A.C. V. rms)	500V	500V	500V	500V	500V	500V	400V
Test voltage (A.C. V) 1min	1500V	1500V	1500V	1500V	1500V	1500V	1200V
Contact resistance mΩ	1	1	1	2.5	2.5	5	5
Insulation resistance mΩ	2000	2000	2000	2000	2000	2000	2000
Wire size mm ² /AWG	≤4.17/11	≤4.17/11	≤4.17/11	≤2/14	≤2/14	≤0.785/18	≤0.785/18