

Specification

Lithium Polymer Battery Pack (LP3867100) 2400mAh 3.7V with Protection Circuit Module (PCM)

This data sheet describes the requirements and properties of lithium polymer rechargeable battery pack manufactured by Cellevia

Mechanical Characteristics

Type number: LP3867100
 Designation IEC system: Lithium polymer battery pack
 Length: $100 \pm 0.4\text{mm}$
 Width: $67 \pm 0.4\text{mm}$
 Thickness: $3.8 \pm 0.2\text{mm}$
 Cable: $150 \pm 3.0\text{mm}$ (26AWG UL 1007)
 Weight: appr. 42.1g
 Connector: JST 2.54 male & female connectors

Electrical Specification

Rated capacity: 2380mAh min, 2400mAh typ.
 Nominal voltage: 3.7V
 Max. operating voltage range: 3.0V to 4.2V
 Charge voltage: $4.2 \pm 50\text{mV}$
 Initial charge current: Standard charge: 1200mA
 Rapid charge: 2400mA
 Charging cut-off (A or B)
 A) By time: Standard charge: 7 hours
 Rapid charge: 4 hours
 B) By min. current: 48.0mA
 Max continuous discharge current: 2400mA
 Exp. cycle life: >500 cycles >70% of initial cap. (0.5C/0.5C)
 Internal impedance (1kHz): approx 36mOhm
 Cell protection
 Overcharge detection: $4.325 \pm 25\text{mV}$
 (0.5 to 2.0 sec. delay, resume $4.075 \pm 50\text{mV}$)
 Overdischarge detection: $3.00\text{V} \pm 25\text{mV}$
 (6.25 to 250msec. delay, resume $2.9\text{V} \pm 100\text{mV}$)

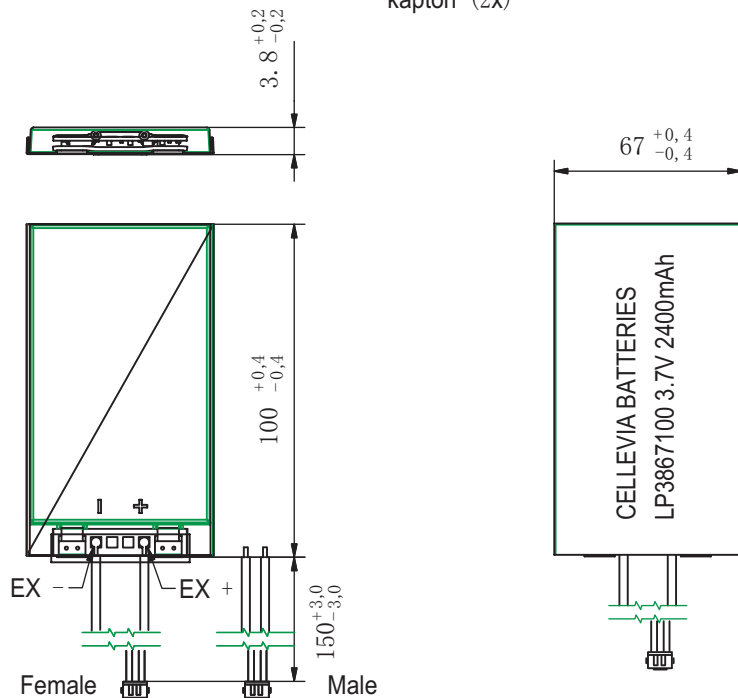
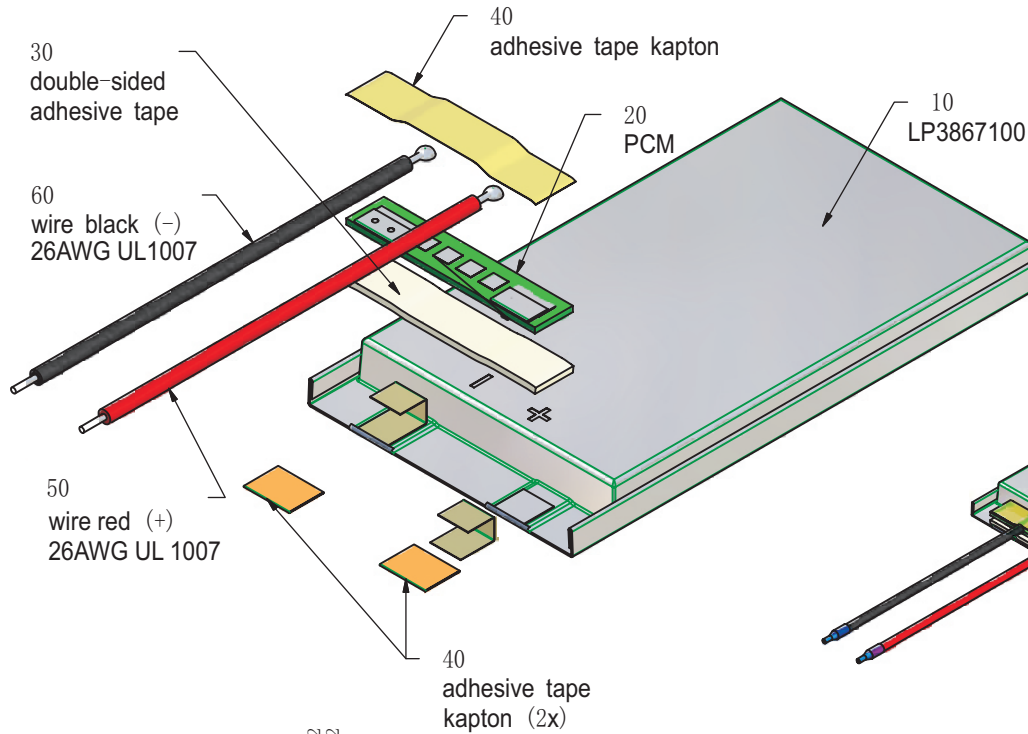
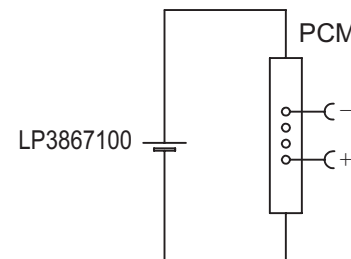
Ambient conditions

Temperature range
 Charge: 0 to +45°C
 Discharge: -20 to +60°C
 Charge retention/Storage: 1 year at -20 to 20°C >70%
 3 month at -20 to 45°C > 70%
 1 month at -20 to 60°C > 70%

Safety

Please follow handling and Safety Precautions Poliflex.

Circuit diagram



Index	Alteration		Date	Name
Projection:		Diese Mae werden besonders geprüft This dimensions are considered inspectable	Material: 6645175 6819	
Mae in mm All dimensions in mm	Freimtoleranzen Generaltoleranzen	Date: 12.08.2013 Name: Xie Qingfang		
Als Betriebsgeheimnis anvertraut, alle Rechte vorbehalten.	up to 6 : 0,1 over 6 up to 30 : 0,2	Bearb./Desig: 12.08.2013 Gepr./Check: Guo Daxia		
Proprietary data, company confidential, all rights reserved.	over 30 up to 100 : 0,3 over 100 : 0,5	Benennung/Designation: LP3867100		
		Origin:	Zchng. / Dwg. Nr.: 3 FD_2566_18	Index: