

Specification

Lithium Polymer Battery Pack (LP443450) 750mAh 3.7V with Protection Circuit Module (PCM)
 This data sheet describes the requirements and properties of lithium polymer rechargeable battery pack manufactured by Cellevia

Mechanical Characteristics

Type number: LP443450
 Designation IEC system: Lithium polymer battery pack
 Length: 50 ± 0.4 mm
 Width: 34 ± 0.4 mm
 Thickness: 4.4 ± 0.2 mm
 Cable: 150 ± 3.0 mm (26AWG UL 1007)
 Weight: appr. 15.0g
 Connector: JST 2.54 male & female connectors

Electrical Specification

Rated capacity: 750mAh min, 780mAh typ.
 Nominal voltage: 3.7V
 Max. operating voltage range: 3.0V to 4.2V
 Charge voltage: 4.2 ± 50 mV
 Initial charge current: Standard charge: 375mA
 Rapid charge: 750mA
 Charging cut-off (A or B)
 A) By time: Standard charge: 7 hours
 Rapid charge: 4 hours
 B) By min. current: 15.0mA
 Max continuous discharge current: 750mA
 Exp. cycle life: >500 cycles >70% of initial cap. (0.5C/0.5C)
 Internal impedance (1kHz): approx 50mOhm
 Cell protection
 Overcharge detection: 4.325 ± 25 mV
 (0.5 to 2.0 sec. delay, resume 4.075 ± 50 mV)
 Overdischarge detection: $3.00V \pm 25$ mV
 (6.25 to 250msec. delay, resume $2.9V \pm 100$ mV)

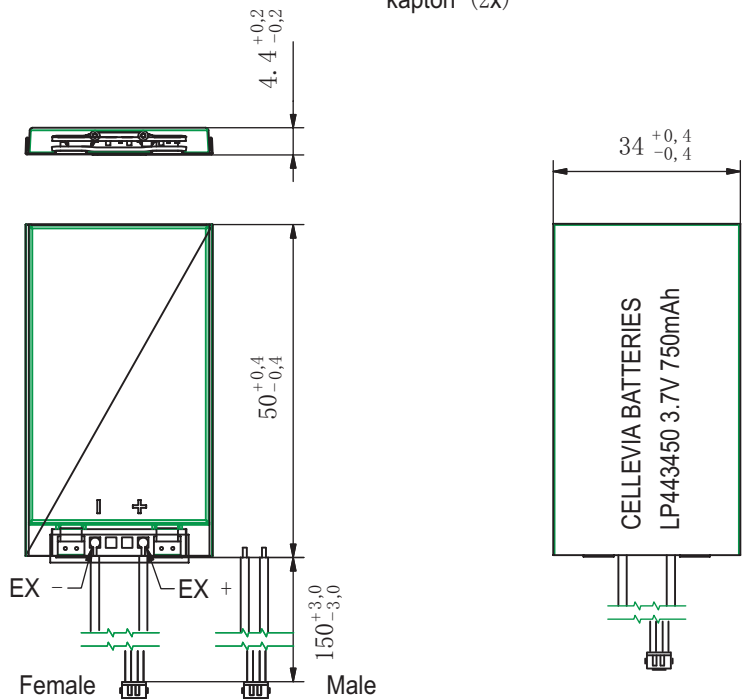
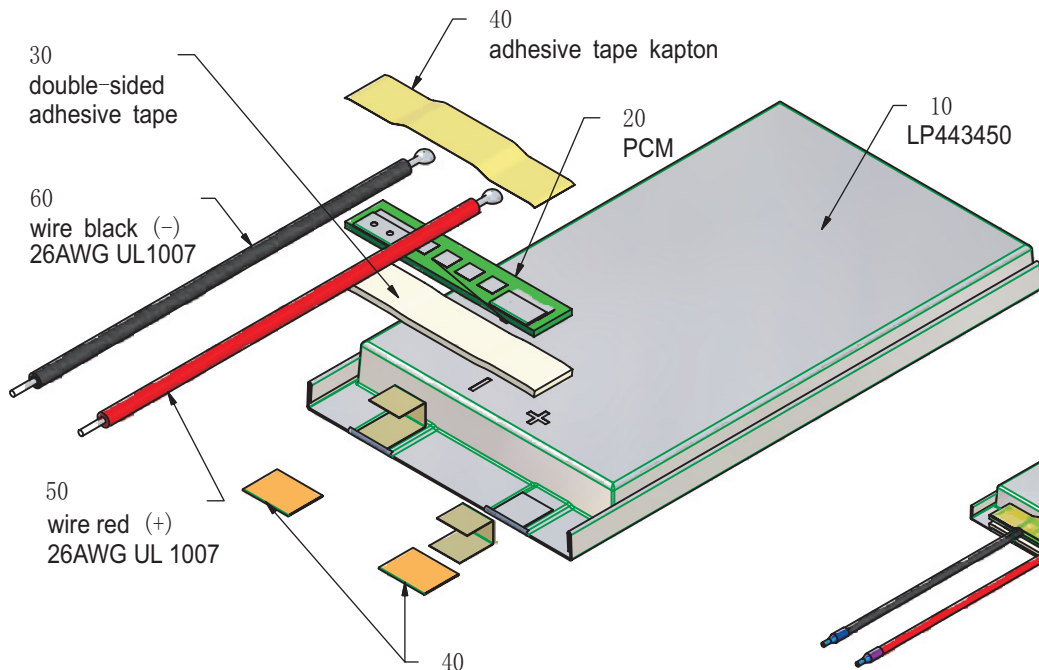
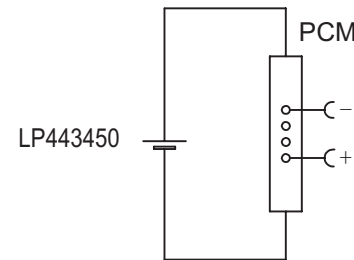
Ambient conditions

Temperature range
 Charge: 0 to +45°C
 Discharge: -20 to +60°C
 Charge retention/Storage: 1 year at -20 to 20°C >70%
 3 month at -20 to 45°C >70%
 1 month at -20 to 60°C >70%

Safety

Please follow handling and Safety Precautions Poliflex.

Circuit diagram



Index	Alteration		Date	Name
Projection:				
Diese Mae werden besonders gepruft This dimensions are considered inspectable		Material: 6645175 6819		
Mae in mm	Freimatoleranzen	Date	Name	
All dimensions in mm	Generaltoleranzen	Erst./Orig.	12.08.2013 Xie Qingfang	
Als Betriebsgeheimnis anvertraut, alle Rechte vorbehalten.	up to 6	± 0,1	Bearb./Desig.	
	over 6 up to 30	± 0,2	Gepr./Check.	
Proprietary data, company confidential, all rights reserved.	over 30 up to 100	± 0,3	12.08.2013 Guo Daxia	
	over 100	± 0,5	Benennung/Designation	
			LP443450	Zchnng. / Dwg. Nr.
		Origin:	3	FD_2566_21

