

Specification

Lithium Polymer Battery Pack (LP903450) 1600mAh 3.7V with Protection Circuit Module (PCM)
 This data sheet describes the requirements and properties of lithium polymer rechargeable battery pack manufactured by Cellevia

Mechanical Characteristics

Type number: LP903450
 Designation IEC system: Lithium polymer battery pack
 Length: 50 ± 0.4 mm
 Width: 34 ± 0.4 mm
 Thickness: 9.0 ± 0.2 mm
 Cable: 150 ± 3.0 mm (26AWG UL 1007)
 Weight: appr. 31.5g
 Connector: JST 2.54 male & female connectors

Electrical Specification

Rated capacity: 1600mAh min, 1650mAh typ.
 Nominal voltage: 3.7V
 Max. operating voltage range: 3.0V to 4.2V
 Charge voltage: 4.2 ± 50 mV
 Initial charge current: Standard charge: 800mA
 Rapid charge: 1600mA
 Charging cut-off (A or B)
 A) By time: Standard charge: 7 hours
 Rapid charge: 4 hours
 B) By min. current: 32.0mA
 Max continuous discharge current: 1600mA
 Exp. cycle life: >500 cycles >70% of initial cap. (0.5C/0.5C)
 Internal impedance (1kHz): approx 38mOhm
 Cell protection
 Overcharge detection: 4.325 ± 25 mV
 (0.5 to 2.0 sec. delay, resume 4.075 \pm 50mV)
 Overdischarge detection: $3.00V \pm 25$ mV
 (6.25 to 250msec. delay, resume $2.9V \pm 100$ mV)

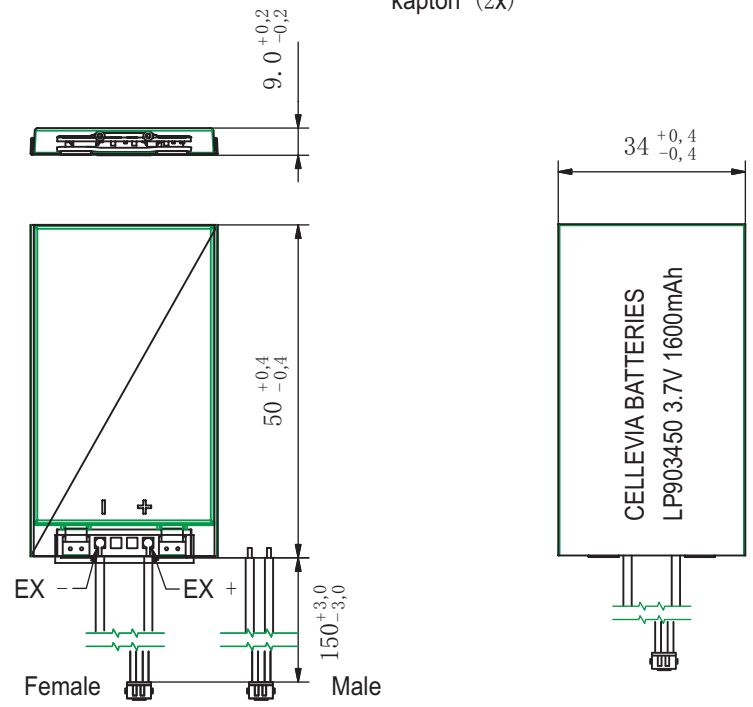
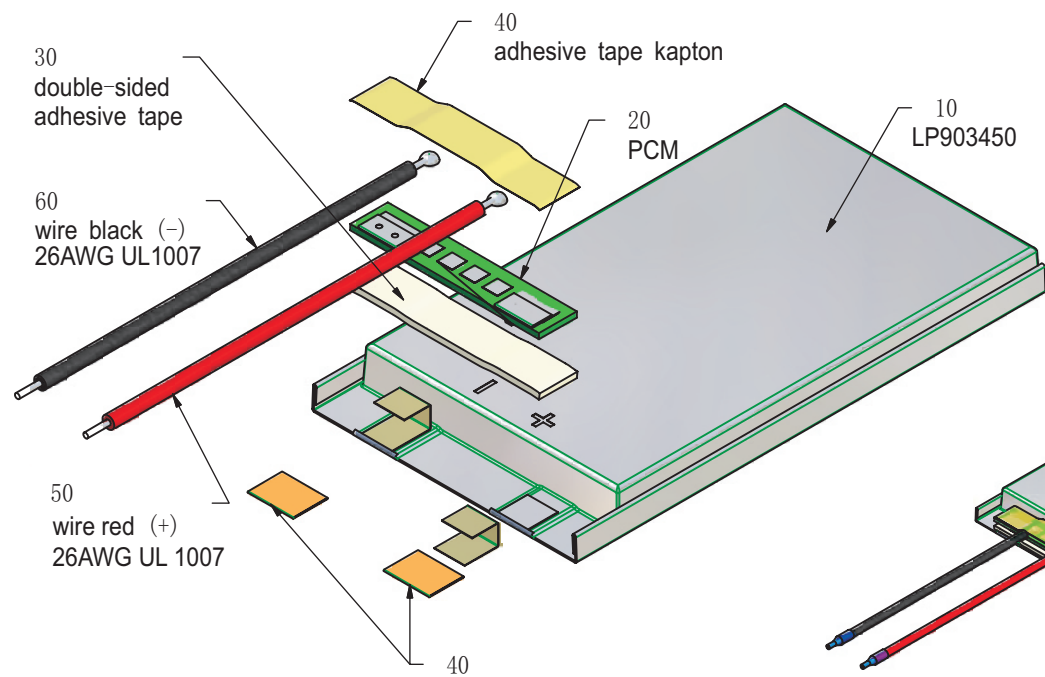
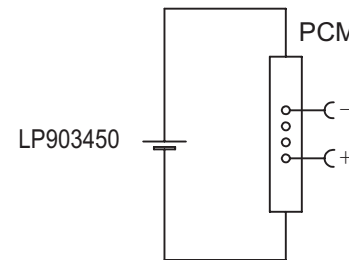
Ambient conditions

Temperature range
 Charge: 0 to +45°C
 Discharge: -20 to +60°C
 Charge retention/Storage: 1 year at -20 to 20°C >70%
 3 month at -20 to 45°C >70%
 1 month at -20 to 60°C >70%

Safety

Please follow handing and Safety Precautions Poliflex.

Circuit diagram



Index	Alteration		Date	Name
Projection:				
Diese Mae werden besonders geprüf This dimensions are considered inspectable		Material: 6645175 6819		
Mae in mm	Freimtoleranzen	Erst./Orig.	Date	Name
All dimensions in mm	Generaltoleranzen	Bearb./Desig.	12.08.2013	Xie Qingfang
Als Betriebsgeheimnis anvertraut, alle Rechte vorbehalten.	up to 6: 0,1 over 6: 0,2	Cepr./Check.	12.08.2013	Guo Daxia
Proprietary data, company confidential, all rights reserved.	over 30: 0,3 up to 100: 0,3 over 100: 0,5	Benennung/Designation		Index
		LP903450		
		Zchnng. / Dwg. Nr.		
		3 FD_2566_12		
		Origin:		

