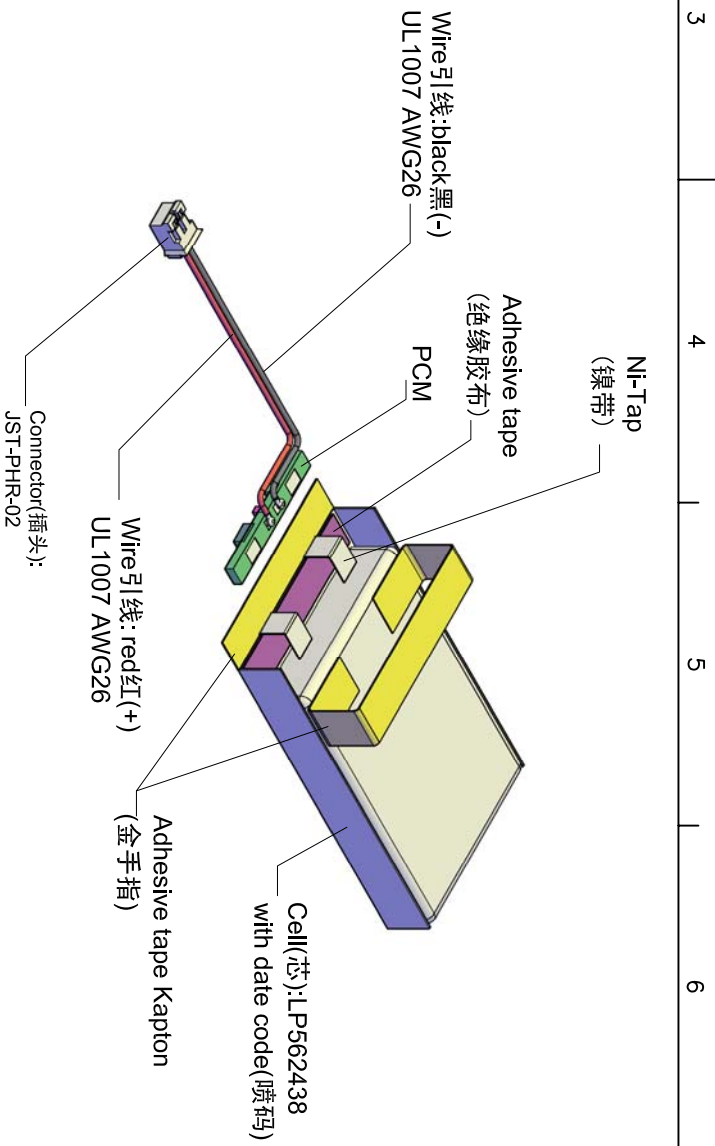
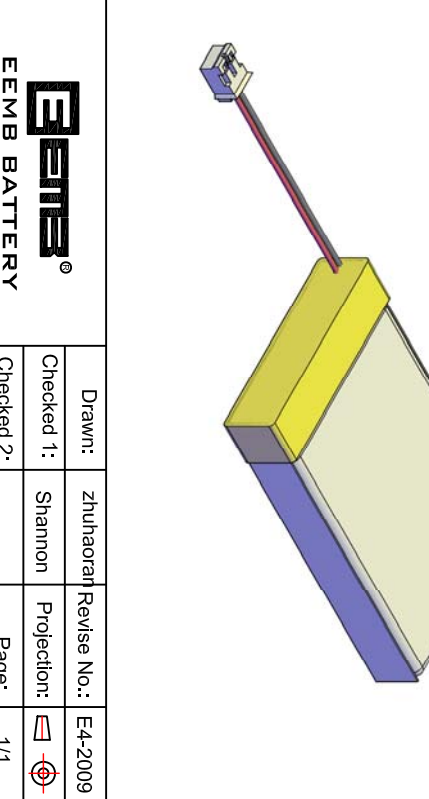


Circuit diagram



Battery pack specification (电池组规格)	Model:	LP562438	Min.Capacity 最低容量 (mAh) (0.2C, 25±3°C)	450	Overcharge Detection Voltage (V) 4.28±0.05
	Typical Capacity 典型容量 (mAh) (0.2C, 25±3°C)	500	Overdischarge Detection Voltage (V) 过放保护电压 (V)	3.0±0.1	
	Single cell capacity (单体电芯容量)	500	Overcurrent protection 过流保护	Limited to Max loading current 仅用于最大的负载电流	
	Single cell capacity (单体电芯容量)	500	Peak value 1.0 (A) 峰值 1.0 (A)	constant (A) 持续 0.5 (A)	
Ambient Conditions (环境温度)	Charge Temp. 充电温度 (°C)	0~45	Customer required Max loading current 客户要求最大的负载电流	constant (A) 持续 (A)	If actual application loading current is bigger than EEMB suggested, please indicate. The application profile is important for an appropriate PCM design. (如果实际应用的负载电流大于EEMB提供值, 请提出来, 实际的应用情况对PCM的设计至关重要)
	Discharge Temp. 放电温度 (°C)	-20~60	Internal impedance 内阻 (≅) (mΩ, AC 1KHz)	220	
	Humidity (湿度)	65±20%	Nominal Voltage 标称电压 (V)	3.7	



Remark(备注):  
 1. No scratch, distortion, discoloration and leakage on the appearance of the cell(电池表面无划痕、变形、污点及漏液等现象).  
 2. RoHS compliant(严格按照ROHS要求生产).

Title	File NO.	EEMB BATTERY	Drawn:	zhuhaoran	Revise No.:	E4-2009	
			Checked 1:	Shannon	Projection:	1/1	
Checked 2:	Approved:	Draw Date:	2014/02/06	Scale:	1.3: 1	Unit:	mm